

# LINCOLN AIRPORT

AIRPORT MASTER PLAN



# LINCOLN AIRPORT

AIRPORT MASTER PLAN

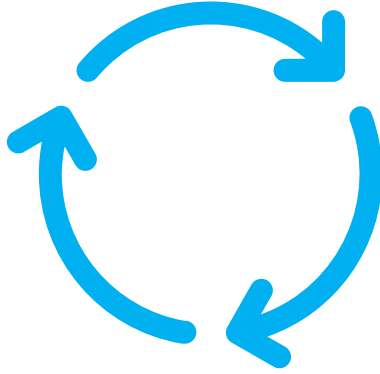


## TECHNICAL ADVISORY COMMITTEE MEETING #2

July 15, 2021

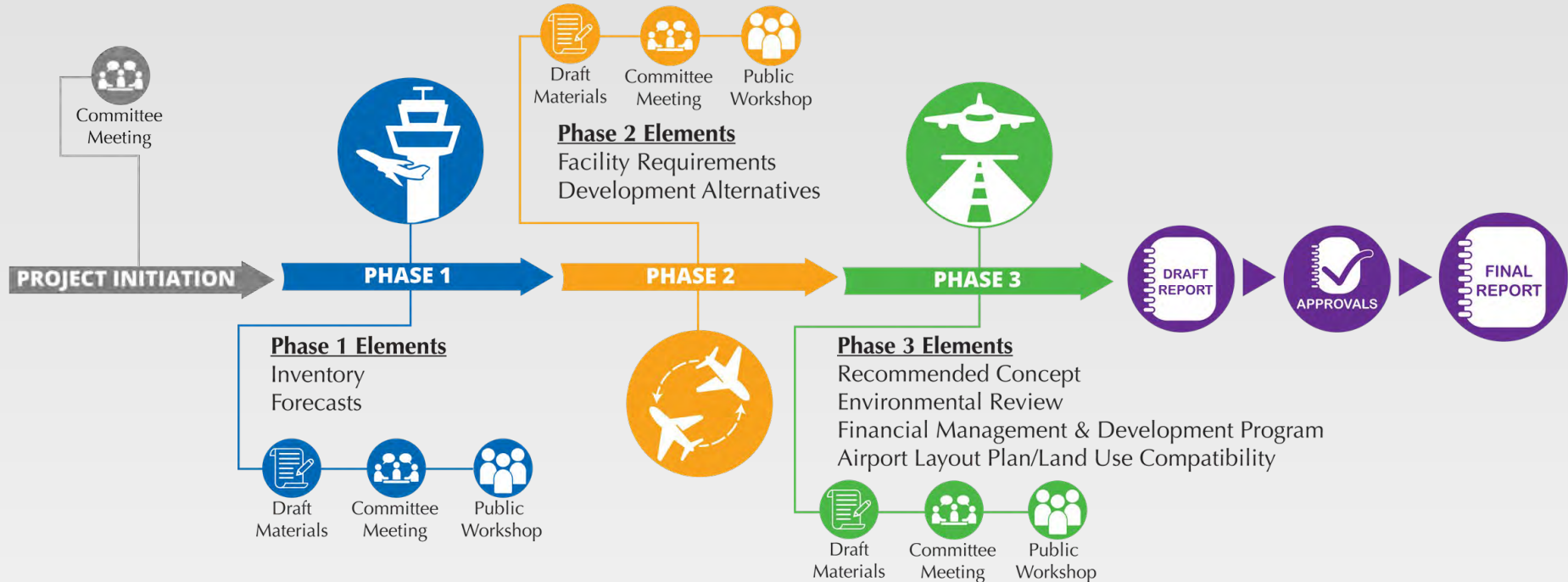
# WELCOME BACK!



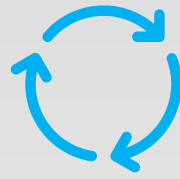


# MASTER PLAN PROCESS

# Master Plan Process





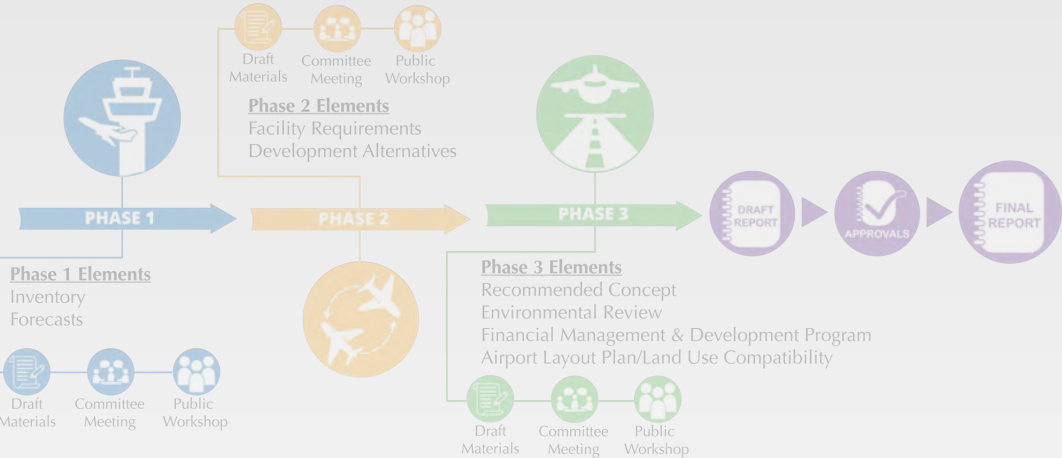


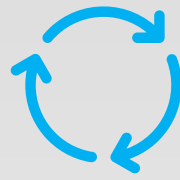
# Master Plan Process



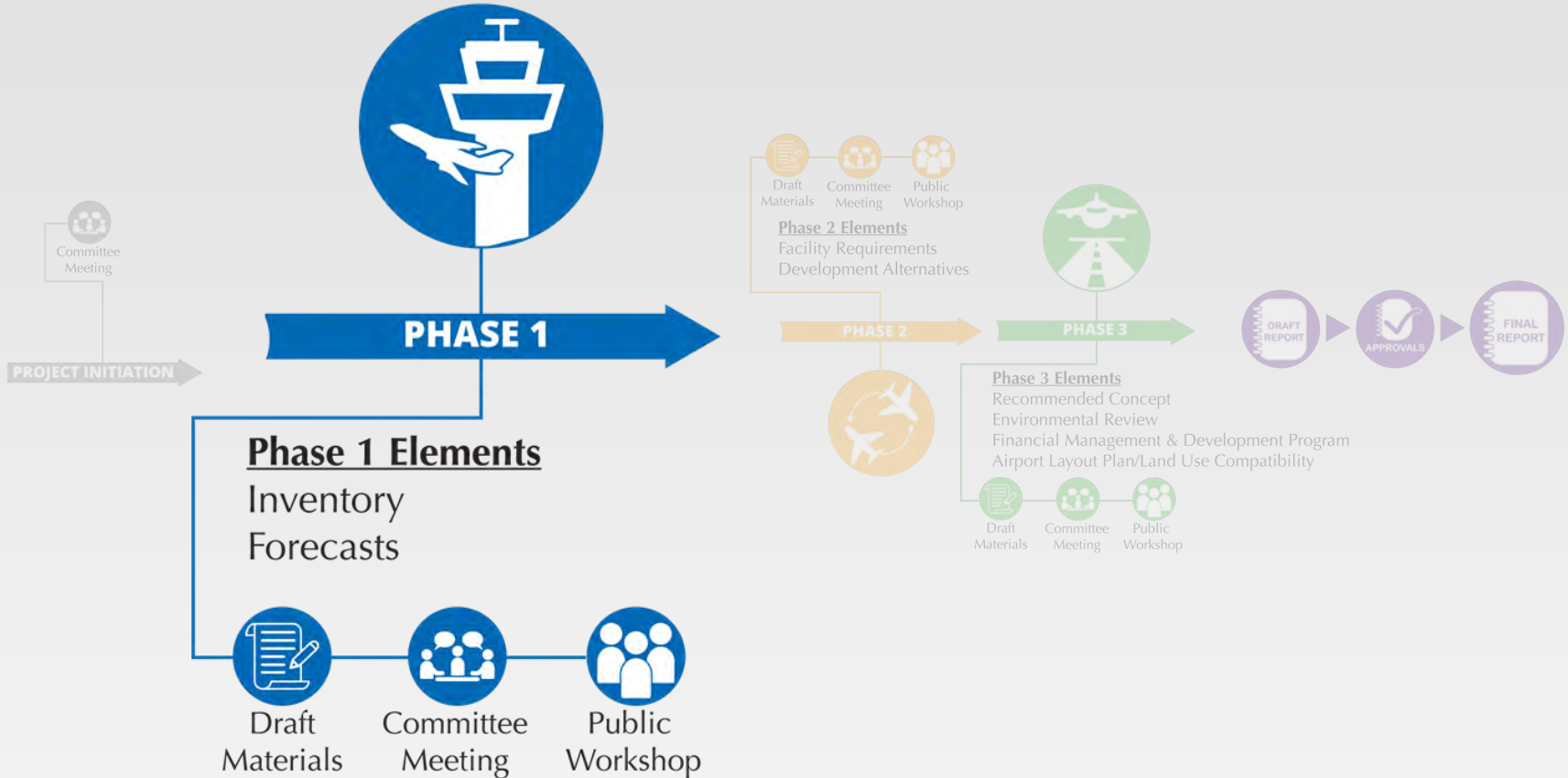
Committee Meeting

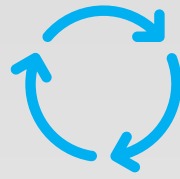
**PROJECT INITIATION**



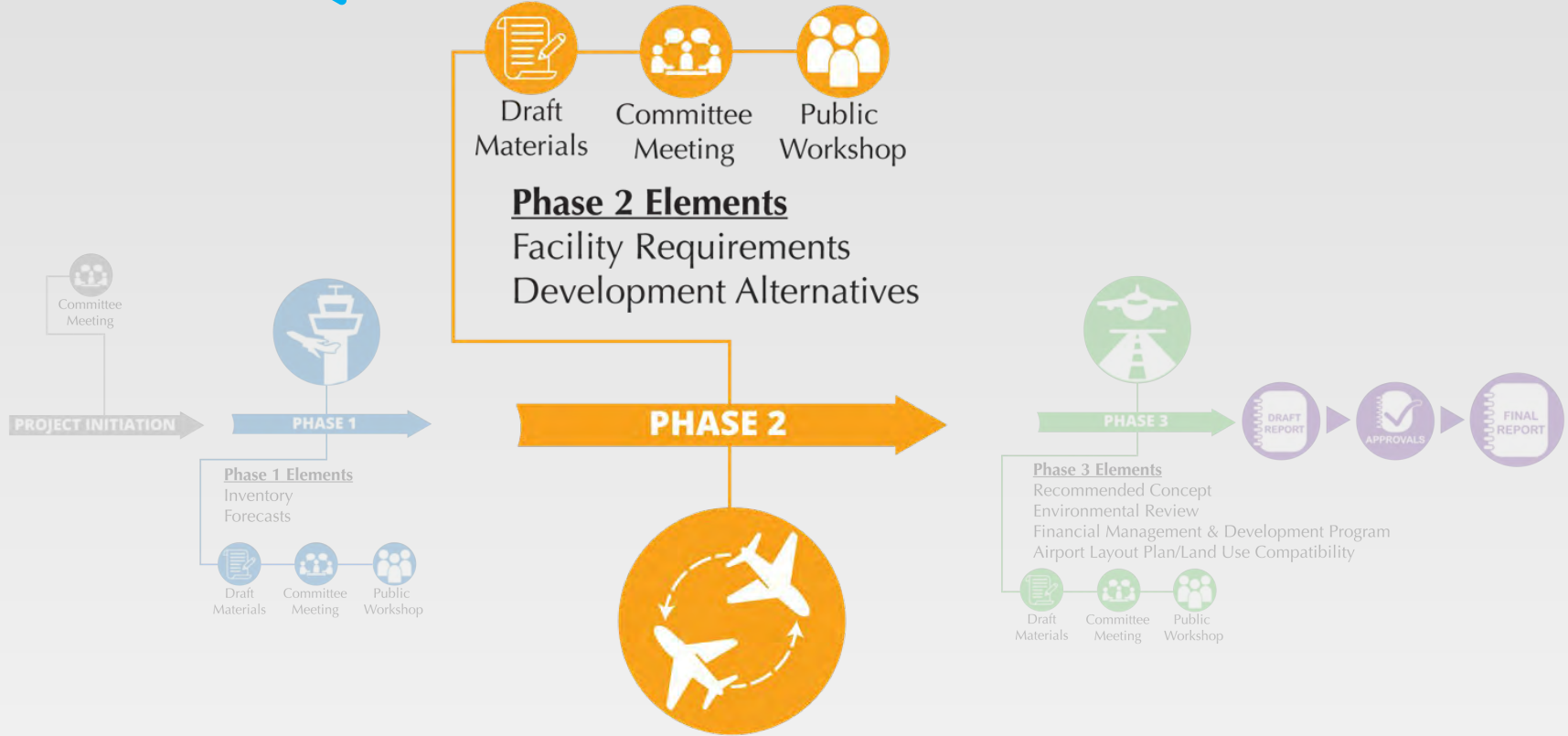


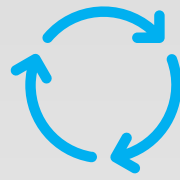
# Master Plan Process





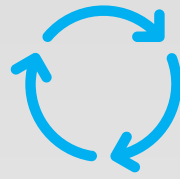
# Master Plan Process



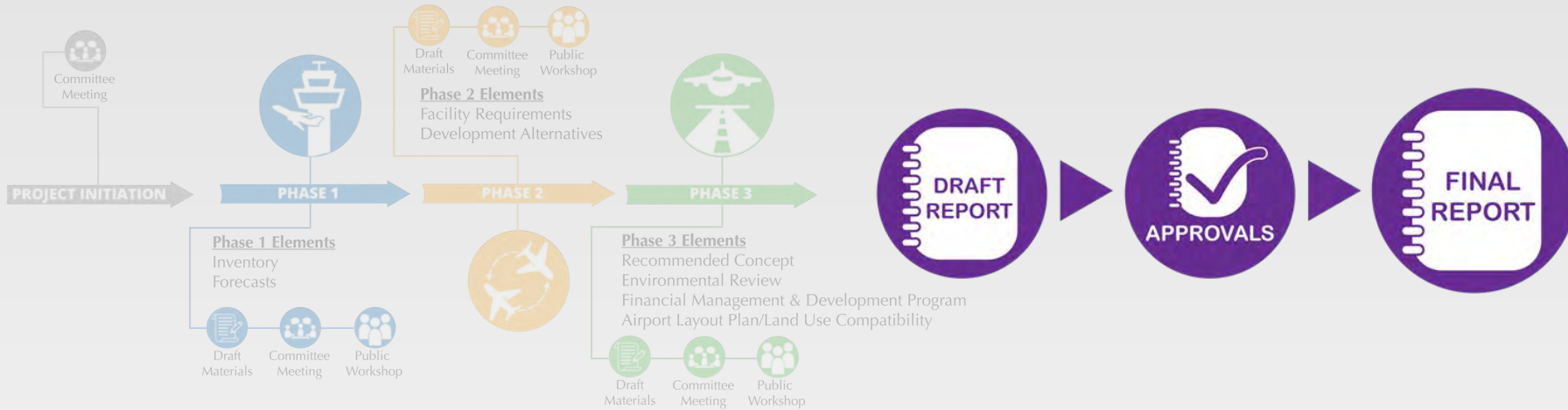


# Master Plan Process





# Master Plan Process







Chapter 1

# INVENTORY



## INVENTORY

### CHAPTER ONE INVENTORY

Lorem ipsum dolor sit amet, consectetur adipiscing elit, sed diam nonummy nibh euismod tincidunt ut laoreet dolore magna aliquam erat volutpat. Ut wisi enim ad minim veniam, quis nostrud exerci tation ullamcorper suscipit lobortis nisl ut aliquip ex ea commodo consequat. Vel eum iriure dolor in hendrerit in vulputate velit esse molestie consequat, vel

illum dolore eu feugiat nulla facilisis at vero eros et accumsan et iusto odio dignissim qui blandit praesent luptatum zzril delenit augue duiis dolore te feugait nulla facilisi. Lorem ipsum dolor sit amet, consectetur adipiscing elit, sed diam nonummy nibh euismod tincidunt ut laoreet dolore magna aliquam erat volutpat. Ut wisi enim ad minim veniam, quis nostrud exerci tation ullamcorper suscipit lobortis nisl ut aliquip ex ea commodo consequat. Vel eum iriure dolor in hendrerit in vulputate velit esse molestie consequat, vel illum dolore eu feugiat nulla facilisis at vero eros et accumsan et iusto odio dignissim qui blandit praesent luptatum zzril

Lorem ipsum dolor sit amet, consectetur adipiscing elit, sed diam nonummy nibh euismod tincidunt ut laoreet dolore magna aliquam erat volutpat. Ut wisi enim ad minim veniam, quis nostrud exerci tation ullamcorper suscipit lobortis nisl ut aliquip ex ea commodo consequat. Vel eum iriure dolor in hendrerit in vulputate velit esse molestie consequat, vel illum dolore eu feugiat nulla facilisis at vero eros et accumsan et iusto odio dignissim qui blandit praesent luptatum zzril

Lorem ipsum dolor sit amet, consectetur adipiscing elit, sed diam nonummy nibh euismod tincidunt ut laoreet dolore magna aliquam erat volutpat. Ut wisi enim ad minim veniam, quis nostrud exerci tation ullamcorper suscipit lobortis nisl ut aliquip ex ea commodo consequat. Vel eum iriure dolor in hendrerit in vulputate velit esse molestie consequat, vel illum dolore eu feugiat nulla facilisis at vero eros et accumsan et iusto odio dignissim qui blandit praesent luptatum zzril





Exhibit 1C:  
Existing Airside Facilities



KEY		
2D - Double Tandem	MALS - Medium-Intensity Approach Lighting System	REIL - Runway End Identification Light
ASOS - Automated Surface Observation System	MIRL - Medium Intensity Runway Lighting	S - Single Wheel Loading
ATIS - Automatic Terminal Information Service	MITL - Medium Intensity Taxiway Lighting	VASI - Visual Approach Slope Indicator
D - Double Wheel Loading	PAPI - Precision Approach Path Indicator	VORTAC - VHF Omnidirectional Range/ Tactical Aircraft Control
HIRL - High Intensity Runway Lighting	ODALS - Omnidirectional Approach Lighting System	
ILS - Instrument Landing System		

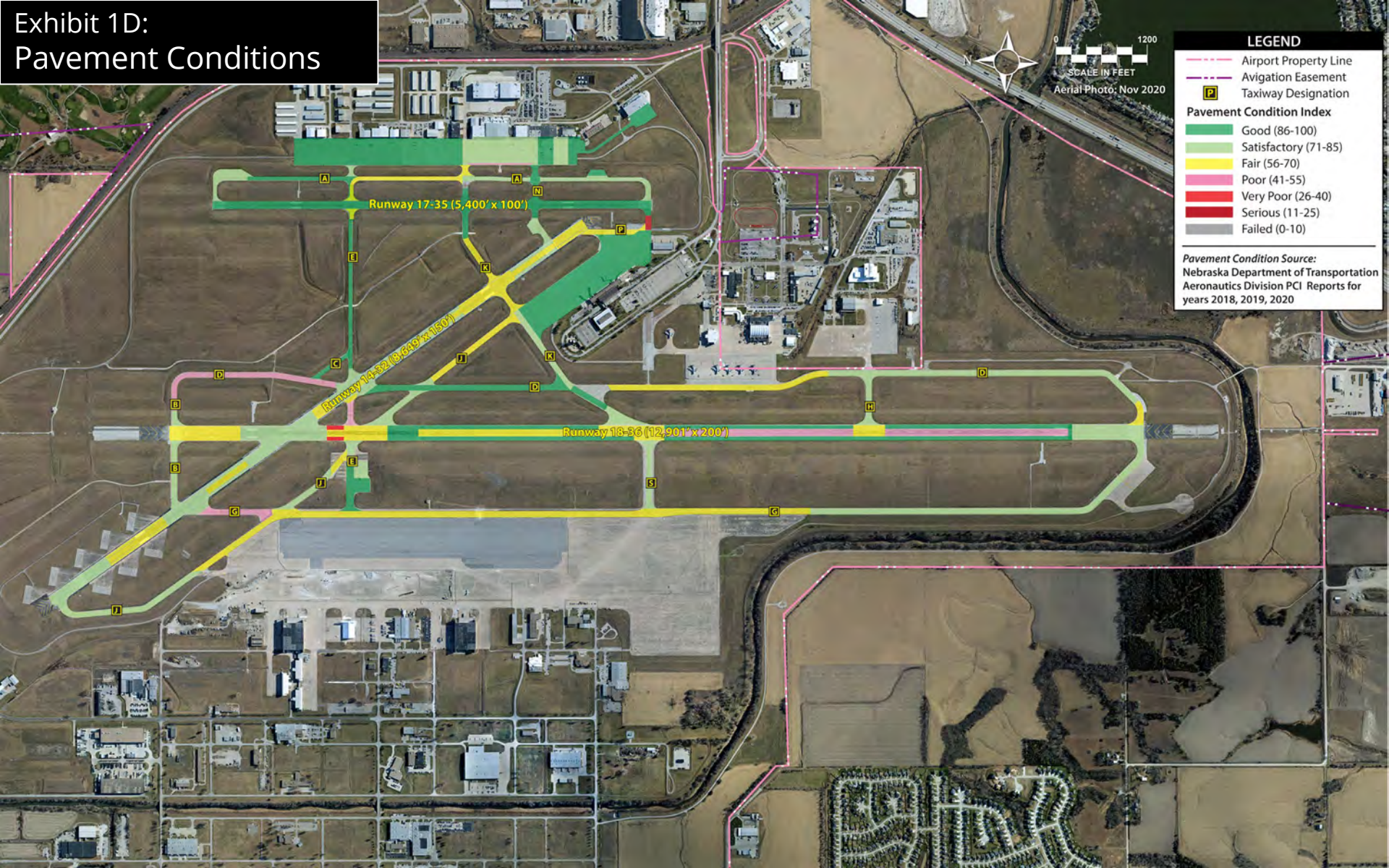
AIRSIDE FACILITY DATA			
Category	Runway 18-36	Runway 14-32	Runway 17-35
Runway Length (feet)	12,901	8,649	5,800
Runway Width (feet)	200	150	100
Runway load bearing strength (thousands of pounds)	S-100, D-200, 2D-400	S-80, D-170, 2D-280	S-45, D-59
Runway Markings	Precision Instrument in good condition	Non-Precision Instrument in good condition	Non-Precision Instrument in good condition
Runway Lighting	HIRL	MIRL	MIRL
Taxiway Lighting	MITL	MITL	MITL
Runway Surface	Asphalt-Concrete/Grooved	Asphalt/Grooved	Asphalt-Concrete/Grooved
Surface Condition	Good	Good	Good
Visual Approach Aids:	1,400 foot MALS	N/A	ODALS
Approach Slope Indicators	PAPI-4L	PAPI-4L	PAPI-4L
REILs	No	Yes	Yes
Navigational Aids	LNK VORTAC	LNK VORTAC	LNK VORTAC
Weather Reporting	ATIS/ASOS	ATIS/ASOS	ATIS/ASOS
Visual Aids	Lighted wind cone	Lighted wind cone	Lighted wind cone

Source: FAA Chart Supplement

# AIRPORT FACILITIES



# Exhibit 1D: Pavement Conditions

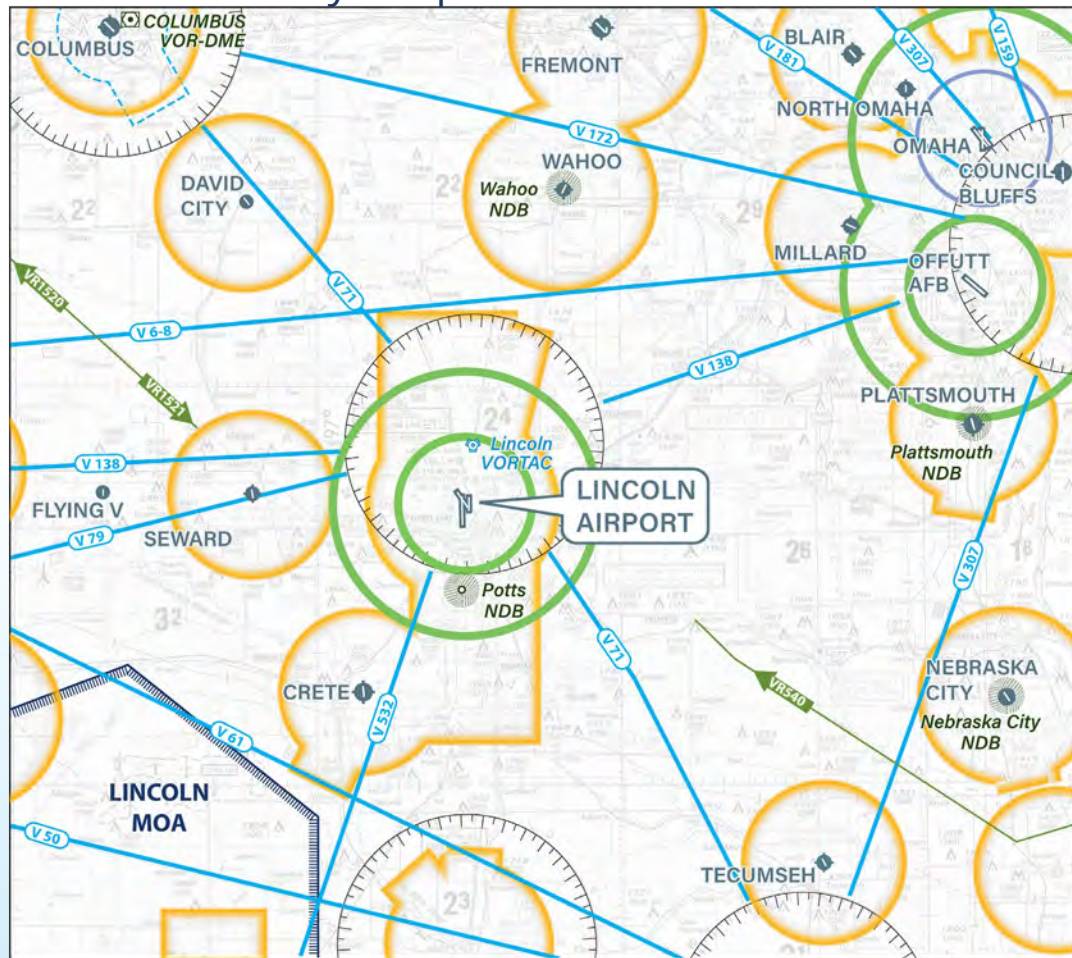




# LINCOLN AIRPORT

## AIRPORT MASTER PLAN

### Exhibit 1G: Vicinity Airspace



### LEGEND



Airport with hard-surfaced runways  
1,500' to 8,069' in length



Airports with hard-surfaced runways  
greater than 8,069' or some multiple  
runways less than 8,069'



Non-directional Radio Beacon (NDB)



VORTAC



VOR-DME



Compass Rose



Victor Airways/Canadian Victor Airways



Class C Airspace



Class D Airspace



Class E (sfc) Airspace with floor 700 ft.  
above surface that laterally abuts  
1200 ft. or higher Class E airspace



Military Training Route



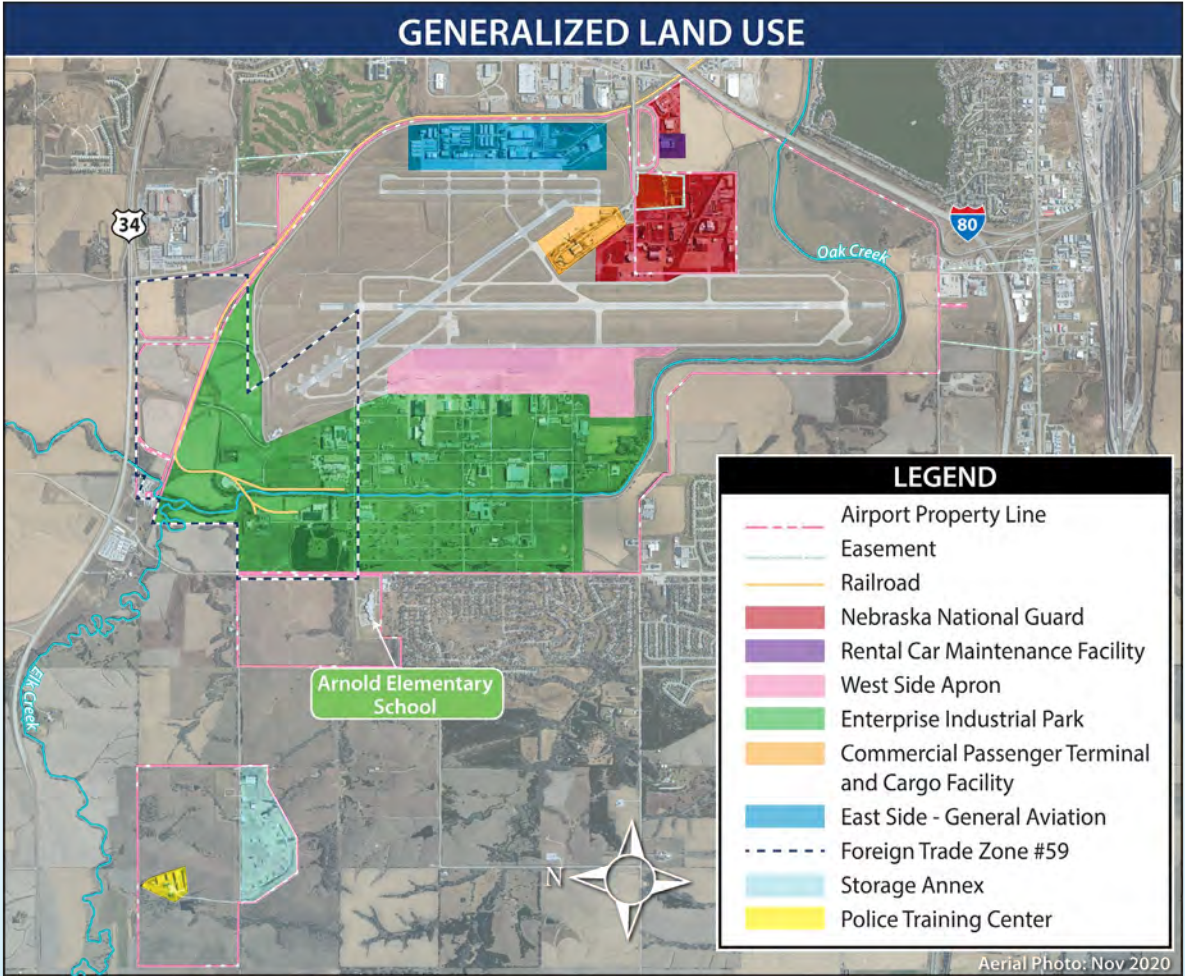
Military Operations Area (MOA)



NOT TO SCALE

# LINCOLN AIRPORT

AIRPORT MASTER PLAN





# LINCOLN AIRPORT

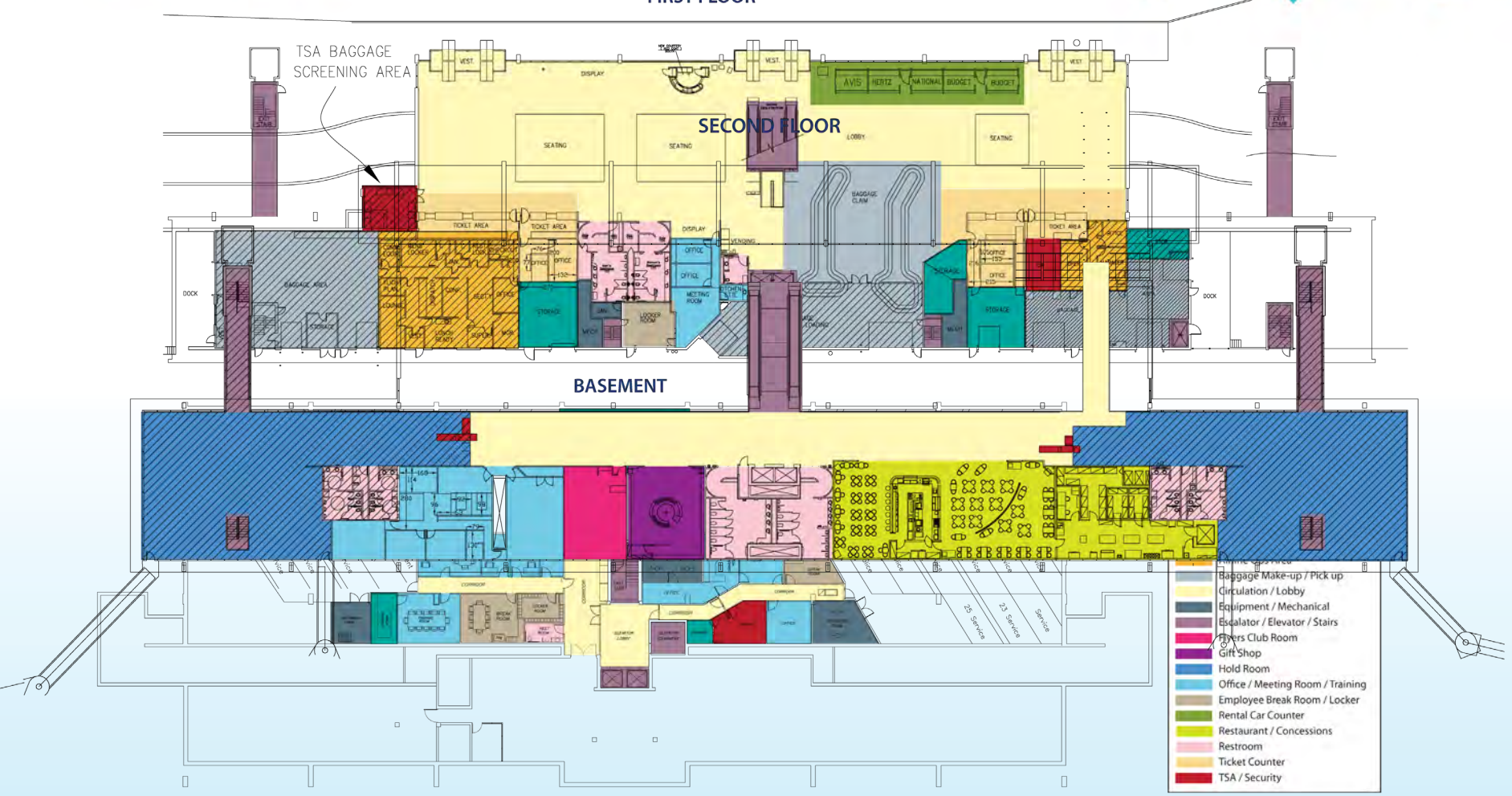
## AIRPORT MASTER PLAN



### FIRST FLOOR

### SECOND FLOOR

### BASEMENT

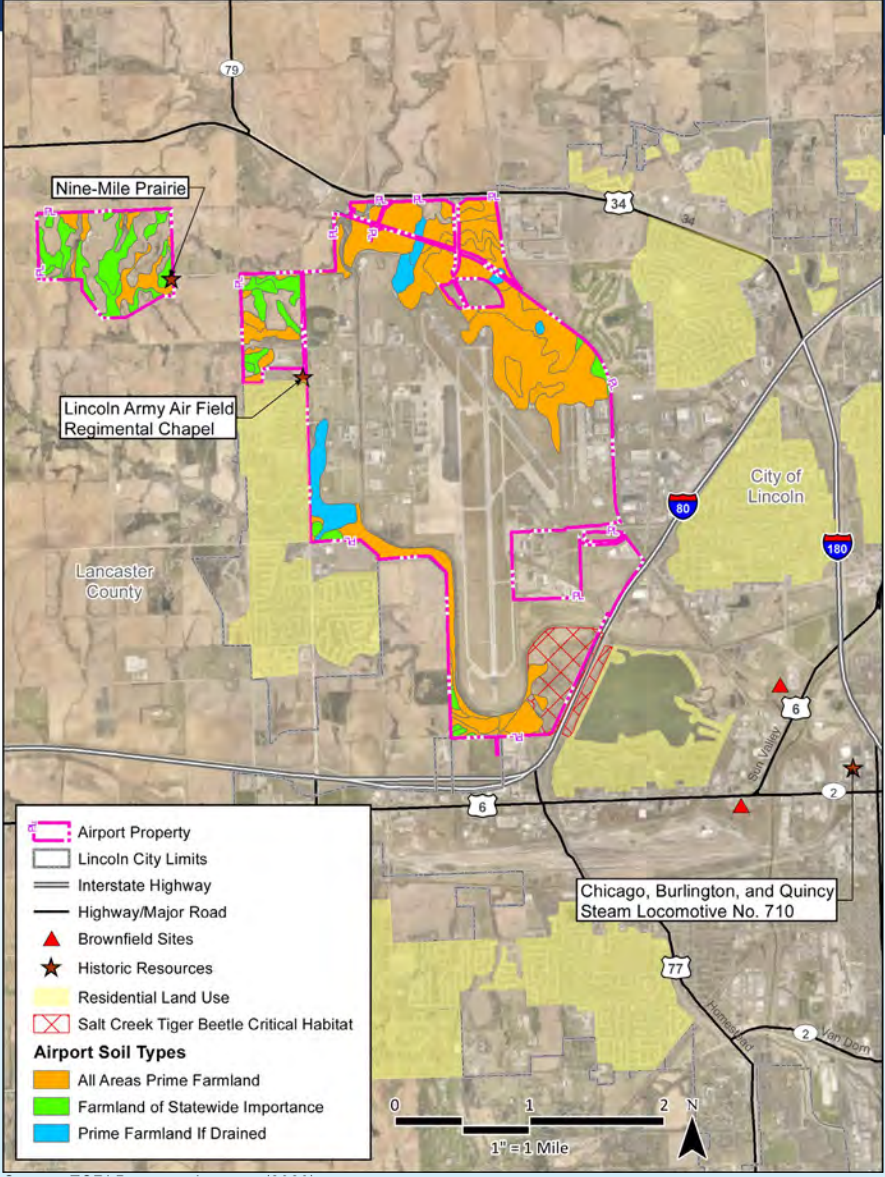


- Baggage Make-up / Pick up
- Circulation / Lobby
- Equipment / Mechanical
- Escalator / Elevator / Stairs
- Flyers Club Room
- Gift Shop
- Hold Room
- Office / Meeting Room / Training
- Employee Break Room / Locker
- Rental Car Counter
- Restaurant / Concessions
- Restroom
- Ticket Counter
- TSA / Security

# LINCOLN AIRPORT

AIRPORT MASTER PLAN

Exhibit 1R:  
Environmental Sensitivities

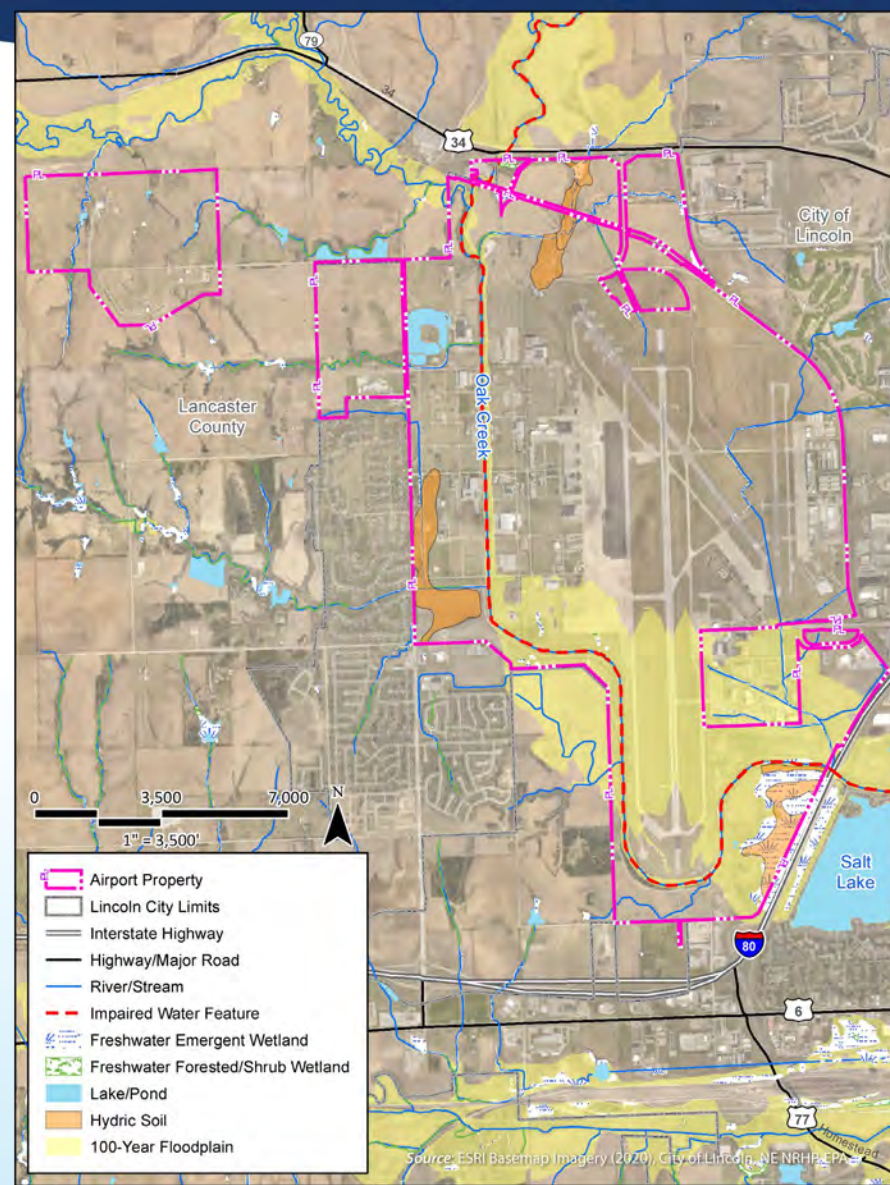




# LINCOLN AIRPORT

## AIRPORT MASTER PLAN

### Exhibit 1V: Water Sensitivities

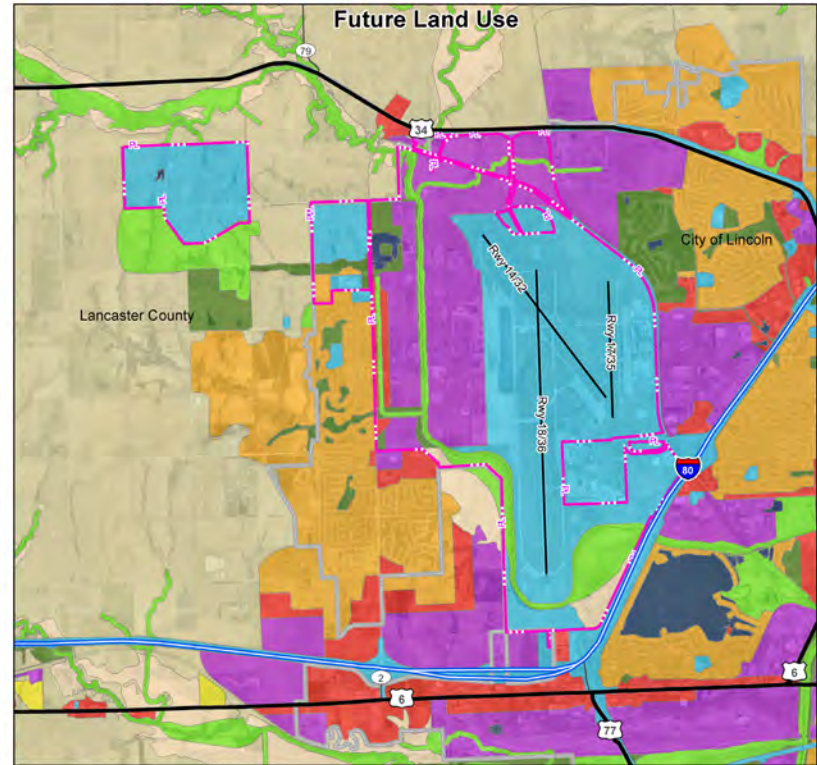
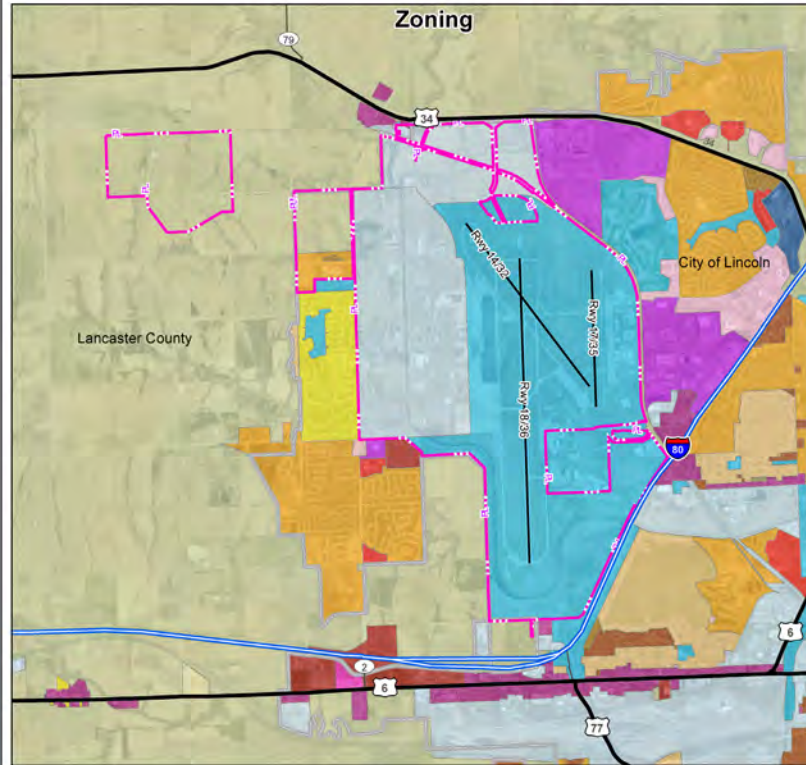




# LINCOLN AIRPORT

## AIRPORT MASTER PLAN

### Exhibit 1S: Land Use



- Zoning**
- |                         |                       |                    |
|-------------------------|-----------------------|--------------------|
| Agriculture             | Residential R-6       | General Commercial |
| Agriculture Residential | Suburban Office       | Industrial         |
| Residential R-1         | Office Park           | Industrial Park    |
| Residential R-2         | Local Business        | Employment Center  |
| Residential R-3         | Planned Neighborhood  | Public Use         |
| Residential R-4         | Interstate Commercial |                    |
| Residential R-5         | Highway Commercial    |                    |

- Runway Centerline  
 — Airport Property  
 — Lincoln City Limits  
 — Interstate Highway  
 — State/Local Highway  
 — Major Road

- Future Land Use**
- |                             |                              |
|-----------------------------|------------------------------|
| Agricultural                | Green Space                  |
| Residential - Low Density   | Environmental Resources      |
| Residential - Urban Density | Agricultural Stream Corridor |
| Commercial                  | Lakes & Streams              |
| Industrial                  | Public & Semi-Public         |



Table 1C: Operations History

Calendar Year	Itinerant Operations					Local Operations			
	Air Carrier	Air Taxi	General Aviation	Military	Total Itinerant	General Aviation	Military	Total Local	Total Operations
2000	5,746	12,022	44,902	11,016	73,686	32,700	8,804	41,504	115,190
2001	3,875	15,685	41,355	12,589	73,504	25,735	6,675	32,410	105,914
2002	1,915	19,107	38,491	15,318	74,831	18,968	6,540	25,508	100,339
2003	330	18,684	36,146	15,749	70,909	15,619	5,652	21,271	92,180
2004	739	19,283	32,965	17,549	70,536	10,538	6,227	16,765	87,301
2005	672	17,599	31,097	13,331	62,699	8,481	5,494	13,975	76,674
2006	951	13,142	26,834	12,469	53,396	12,624	22,353	34,977	88,373
2007	1,209	11,581	25,952	8,355	47,097	15,960	13,868	29,828	76,925
2008	865	12,103	25,902	10,489	49,359	13,409	6,886	20,295	69,654
2009	751	11,924	25,319	12,515	50,509	10,403	4,552	14,955	65,464
2010	375	11,490	24,011	10,091	45,967	12,936	4,265	17,201	63,168
2011	328	11,586	23,629	7,453	42,996	13,080	3,340	16,420	59,416
2012	201	11,395	23,455	10,337	45,388	12,634	3,778	16,412	61,800
2013	165	11,579	22,378	9,086	43,208	10,020	3,302	13,322	56,530
2014	417	11,966	21,117	7,182	40,682	10,147	2,840	12,987	53,669
2015	988	11,610	22,252	9,463	44,313	14,898	3,313	18,211	62,524
2016	1,463	11,200	23,660	8,090	44,413	13,195	3,148	16,343	60,756
2017	1,480	10,693	23,067	7,357	42,597	12,590	3,009	15,599	58,196
2018	834	11,341	22,218	8,420	42,813	12,697	3,345	16,042	58,855
2019	1,000	12,856	23,221	9,012	46,089	11,037	3,577	14,614	60,703
2020	512	9,166	22,792	7,356	39,826	14,438	3,356	17,794	57,620

Source: FAA Operations Network (OPSNET)





Chapter 2

# FORECASTS

# LINCOLN AIRPORT

## FORECASTS



### CHAPTER TWO FORECASTS

Lorem ipsum dolor sit amet, consectetur adipiscing elit, sed diam nonummy nibh euismod tincidunt ut laoreet dolore magna aliquam erat volutpat. Ut wisi enim ad minim veniam, quis nostrud exerci tation ullamcorper suscipit lobortis nisl ut aliquip ex ea commodo consequat. Duis autem vel eum iriure dolor in hendrerit in vulputate velit esse molestie consequat, vel illum dolore eu feugiat nulla facilisis at vero eros et accumsan et justo odio dignissim qui blandit praesent luptatum zzril delenit augue duis dolore te feugait nulla facilisi.

Lorem ipsum dolor sit amet, consectetur adipiscing elit, sed diam nonummy nibh euismod tincidunt ut laoreet dolore magna aliquam erat volutpat. Ut wisi enim ad minim veniam, quis nostrud exerci tation ullamcorper suscipit lobortis nisl ut aliquip ex ea commodo consequat. Duis autem vel eum iriure dolor in hendrerit in vulputate velit esse molestie consequat, vel illum dolore eu feugiat nulla facilisis at vero eros et accumsan et justo odio dignissim qui blandit praesent luptatum zzril delenit augue duis dolore te feugait nulla facilisi.

Lorem ipsum dolor sit amet, consectetur adipiscing elit, sed diam nonummy nibh euismod tincidunt ut laoreet dolore magna aliquam erat volutpat. Ut wisi enim ad minim veniam, quis nostrud exerci tation ullamcorper suscipit lobortis nisl ut aliquip ex ea commodo consequat. Duis autem vel eum iriure dolor in hendrerit in vulputate velit esse molestie consequat, vel illum dolore eu feugiat nulla facilisis at vero eros et accumsan et justo odio dignissim qui blandit praesent luptatum zzril delenit augue duis dolore te feugait nulla facilisi.

Lorem ipsum dolor sit amet, consectetur adipiscing elit, sed diam nonummy nibh euismod tincidunt ut laoreet dolore magna aliquam erat volutpat. Ut wisi enim ad minim veniam, quis nostrud exerci tation ullamcorper suscipit lobortis nisl ut aliquip ex ea commodo consequat. Duis autem vel eum iriure dolor in hendrerit in vulputate velit esse molestie consequat, vel illum dolore eu feugiat nulla facilisis at vero eros et accumsan et justo odio dignissim qui blandit praesent luptatum zzril delenit augue duis dolore te feugait nulla facilisi.



# LINCOLN AIRPORT

AIRPORT MASTER PLAN

Exhibit 2A:  
Historic Enplanements

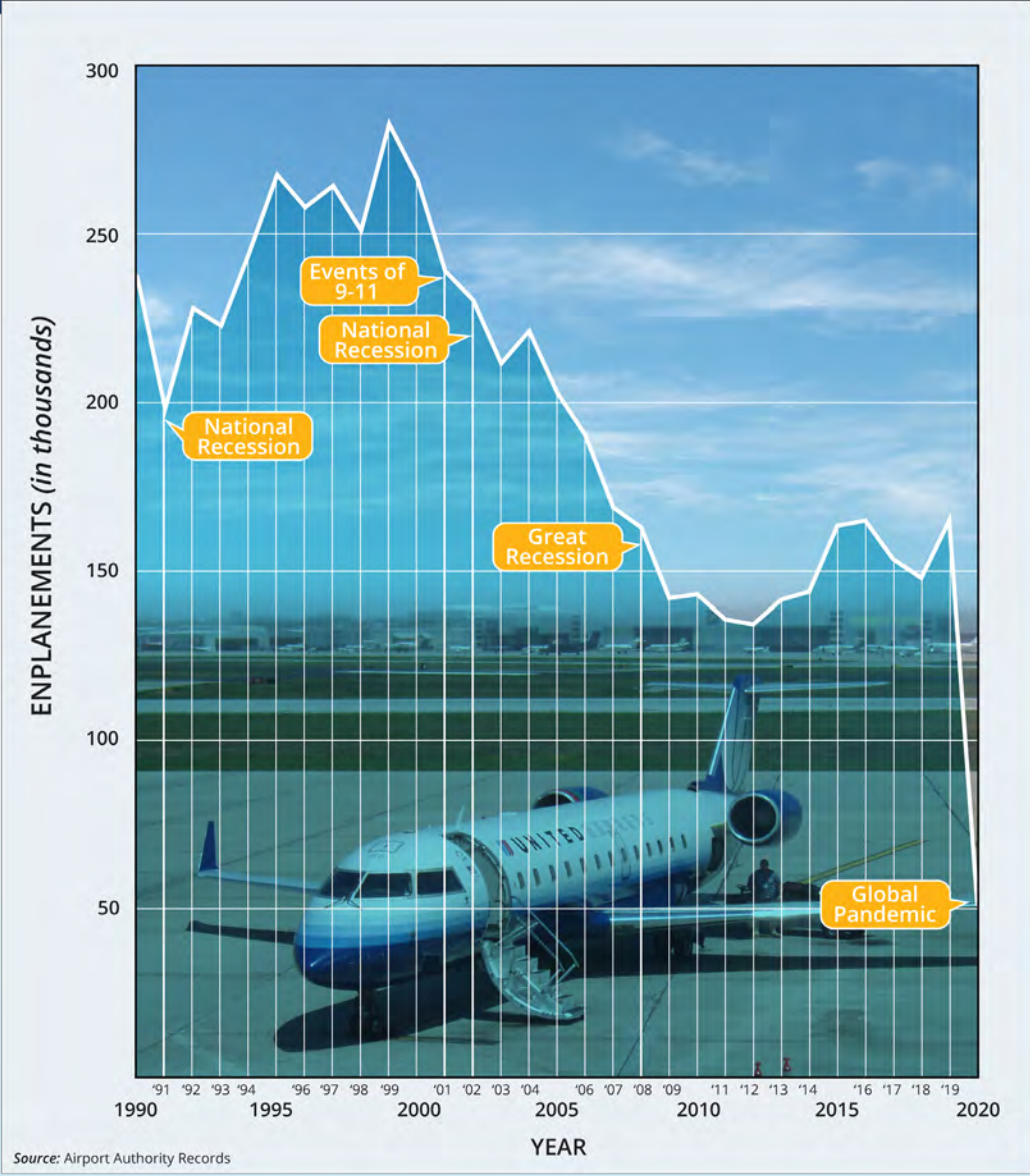




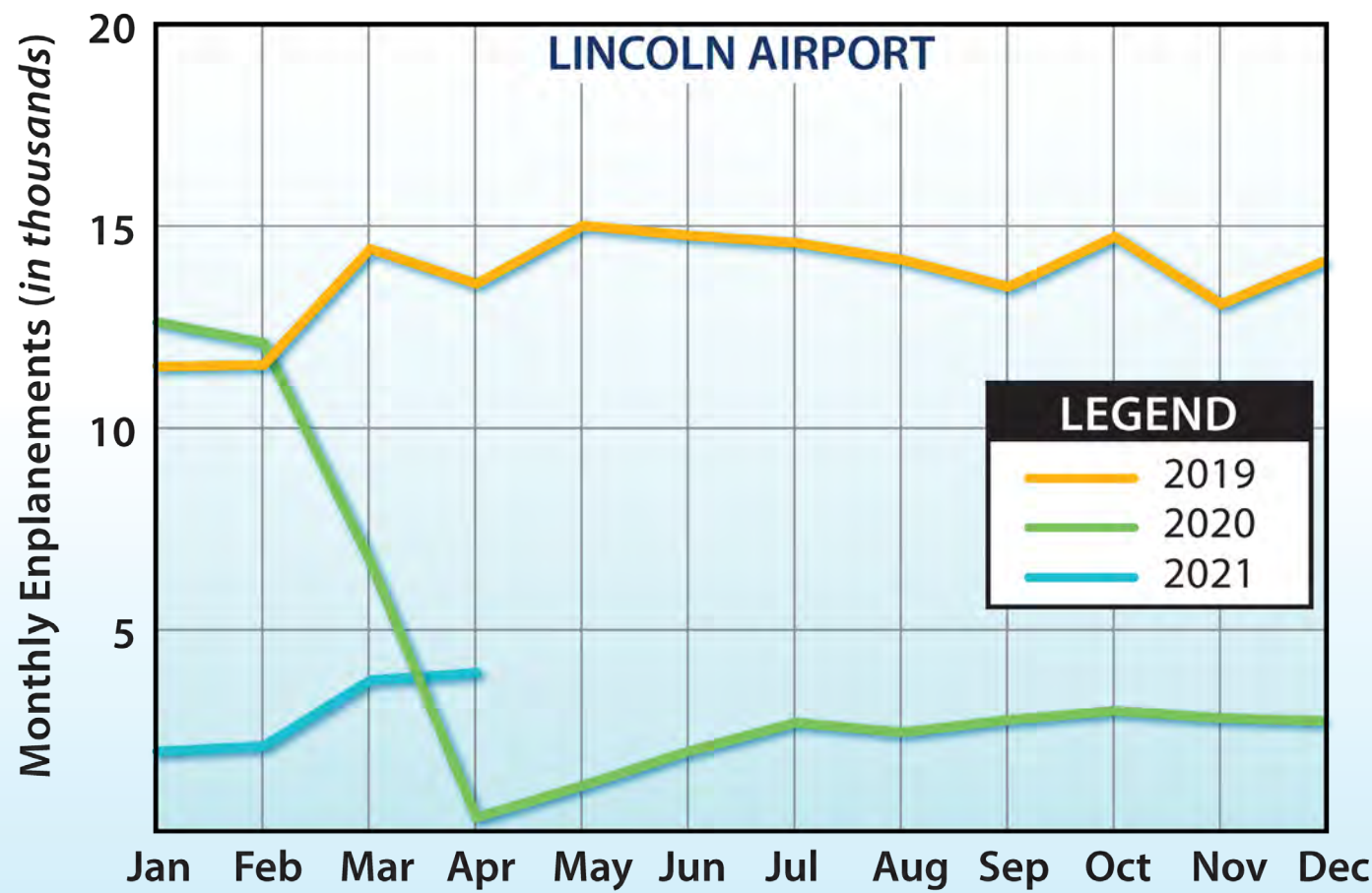


Table 2B: Historical Enplanement Reporting – Lincoln Airport

Year	Airport Authority Records			FAA-DOT Records		
	Scheduled	Charter	Total	ACAIS	T-100	FAA TAF
1999	277,375	5,249	282,624			273,192
2000	263,381	2,994	266,375	262,919		269,521
2001	234,171	4,870	239,041	234,074		243,378
2002	226,436	3,953	230,389	229,625		228,174
2003	208,304	3,290	211,594	213,882	203,041	208,973
2004	219,308	1,920	221,228	220,232	218,133	224,981
2005	200,508	2,409	202,917	203,586	200,575	202,542
2006	187,902	2,559	190,461	190,546	187,666	196,660
2007	165,826	3,068	168,894	170,105	166,239	175,362
2008	159,490	3,439	162,929	163,177	156,069	160,097
2009	137,374	4,651	142,025	142,507	137,313	147,494
2010	136,934	6,218	143,152	143,230	133,612	139,078
2011	131,585	4,228	135,813	135,647	126,286	130,494
2012	128,762	5,598	134,360	135,085	128,679	132,684
2013	136,168	5,416	141,584	138,787	133,456	137,483
2014	137,695	6,249	143,944	142,205	135,630	138,284
2015	158,404	5,061	163,465	160,525	155,102	157,563
2016	159,825	5,192	165,017	162,876	157,315	162,974
2017	149,140	4,377	153,517	154,465	149,602	155,697
2018	143,066	4,905	147,971	150,214	146,099	148,697
2019	162,259	2,739	164,998	166,711	162,611	164,163
2020	50,312	1,038	51,350	NA	50,466	86,695



Figure: Monthly Enplanement Comparison





# LINCOLN AIRPORT

## AIRPORT MASTER PLAN



### Top Twenty Domestic Destinations

Rank	Destination	Airport Identifier
1	Chicago	ORD
2	Minneapolis/St. Paul	MSP
3	Denver	DEN
4	Washington DC	DCA, IAD, AEX
5	Atlanta	ATL
6	Los Angeles	LAX, BUR, ONT, SNA
7	New York City	LGA, JFK, EWR
8	San Francisco	SFO, OAK, SJC
9	Boston	BOS
10	Orlando	MCO
11	Phoenix	PHX
12	Seattle	SEA
13	San Diego	SAN
14	Portland, OR	PDX
15	Raleigh/Durham, NC	RDU
16	Philadelphia	PHL
17	Miami	MIA
18	Austin, TX	AUS
19	Columbus, OH	CMH
20	Tampa, FL	TPA

### Exhibit 2B: TOP TWENTY DOMESTIC DESTINATIONS/ NON-STOP SERVICE CITY PAIRS



### LNK Non-Stop Flights 2019

Atlanta Hartsfield International (ATL)

Denver International (DEN)

Minneapolis-St. Paul International (MSP)

Chicago O'Hare International (ORD)

# LINCOLN AIRPORT

## AIRPORT MASTER PLAN

Exhibit 2C:  
Service Area Drive Time

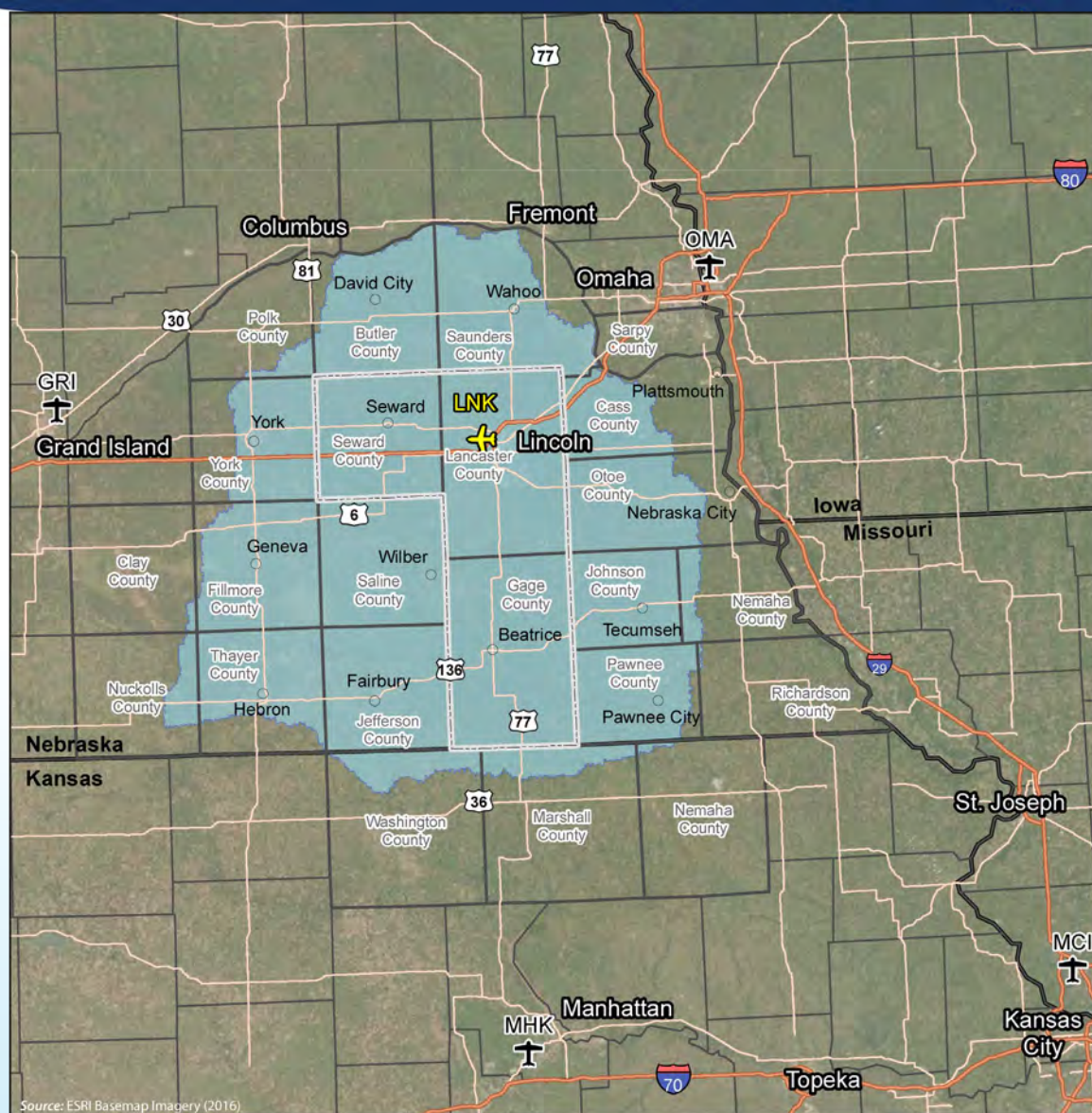
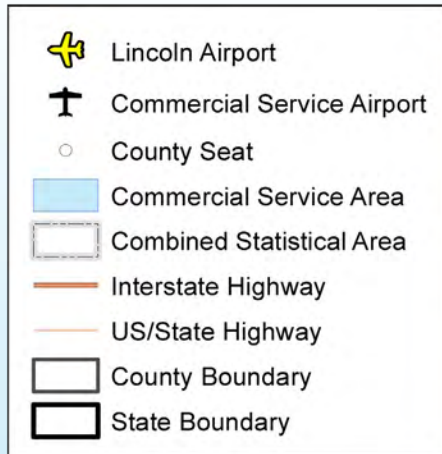






Table 2D: Socioeconomic Forecasts for Lincoln-Beatrice Combined Statistical Area (CSA)

Year	Population	Employment	PCPI (2012 \$)	GRP (millions 2012 \$)
<b>Actual</b>				
2000	290,997	208,038	\$38,598	\$12,865.35
2005	308,335	221,015	\$39,504	\$14,983.96
2010	325,230	222,270	\$40,339	\$15,515.35
2015	344,805	240,281	\$44,047	\$17,755.75
2019	357,887	252,359	\$46,914	\$19,510.87
<b>Forecast</b>				
2025	374,307	268,175	\$51,651	\$21,757.69
2030	386,663	279,689	\$55,646	\$23,608.93
2040	408,336	299,928	\$64,020	\$27,339.62
<b>CAGR</b>				
2000-2019	1.09%	1.02%	1.03%	2.22%
2019-2040	0.63%	0.83%	1.49%	1.62%

Source: Complete Economic and Demographic Data Source (CEDDS), Woods & Poole, 2020



Table 2E: Comparable Market Analysis

MSA/CSA	Airport ID	Hub	2014			2019			Closest Hub (mi)
			MSA/CSA Population	Scheduled Enplaned	TPF	MSA Population	Scheduled Enplaned	TPF	
Cedar Rapids/Iowa City, IA CSA	CID	S	429,059	564,437	1.316	446,137	665,465	1.492	133 - DSM
Evansville, IN MSA	EVV	N	314,859	170,718	0.542	315,086	241,867	0.768	131 - SDF
Davenport, IA/Moline, IL MSA	MLI	N	472,394	369,548	0.782	468,265	353,135	0.754	84 - CID
Rochester/Austin, MN CSA	RST	N	252,076	118,585	0.470	261,983	181,625	0.693	78 - MSP
Columbia/Moberly/Mexico, MO	COU	N	251,358	51,938	0.207	258,309	127,708	0.494	113 - STL
<b>Lincoln/Beatrice, NE CSA</b>	<b>LNK</b>	<b>N</b>	<b>341,191</b>	<b>135,630</b>	<b>0.398</b>	<b>357,877</b>	<b>162,611</b>	<b>0.454</b>	<b>64 - OMA</b>
Montgomery/Selma/Alex. City, AL CSA	MGM	N	466,951	166,852	0.357	461,516	192,371	0.417	95 - BHM
Saginaw/Midland/Bay City CSA	MBS	N	384,786	122,066	0.317	376,821	133,255	0.354	109 - DET
College Station, TX MSA	CLL	N	242,830	87,036	0.358	264,728	80,700	0.305	90 - IAH
Erie/Meadville, PA CSA	ERI	N	366,577	96,927	0.264	354,357	106,576	0.301	114 - CLE
Kalamazoo-Portage, MI CSA	AZO	N	498,503	133,406	0.268	503,706	149,758	0.297	52 - GRR
Waco, TX MSA	ACT	N	260,376	63,893	0.245	273,920	60,252	0.220	107 - AUS
Tyler/Jacksonville, TX CSA	TYR	N	270,831	86,615	0.320	285,397	59,653	0.209	106 - DAL
Greenville/Kinston/Washington, NC CSA	PGV	N	280,568	59,069	0.211	283,685	52,687	0.186	96 - RDU
Columbus/Auburn/Opelika, GA CSA	CSG	N	479,784	40,212	0.084	485,590	50,905	0.105	99 - ATL

**Hub Designations:** L - Large; M - Medium; S - Small; N - Nonhub

**Closest Hub IDs:**

ATL - Atlanta Hartsfield-Jackson (L)  
 AUS - Austin Bergstrom (M)  
 BHM - Birmingham-Shuttlesworth (S)  
 CID - Eastern Iowa Airport (S)  
 CLE - Cleveland Hopkins (M)

DAL - Dallas Love (M)  
 DET - Detroit -Wayne County (L)  
 DSM - Des Moines (S)  
 GRR - Grand Rapids Ford (S)  
 IAH - Houston Bush (L)

MSP - Minneapolis-St. Paul (L)  
 OMA - Omaha Eppley (M)  
 RDU - Raleigh-Durham (M)  
 SDF - Louisville Ali (S)  
 STL - St. Louis Lambert (M)

**Data Sources:**

Population - Annual Estimates of Population, U.S. Census Bureau, Population Division, March 2020

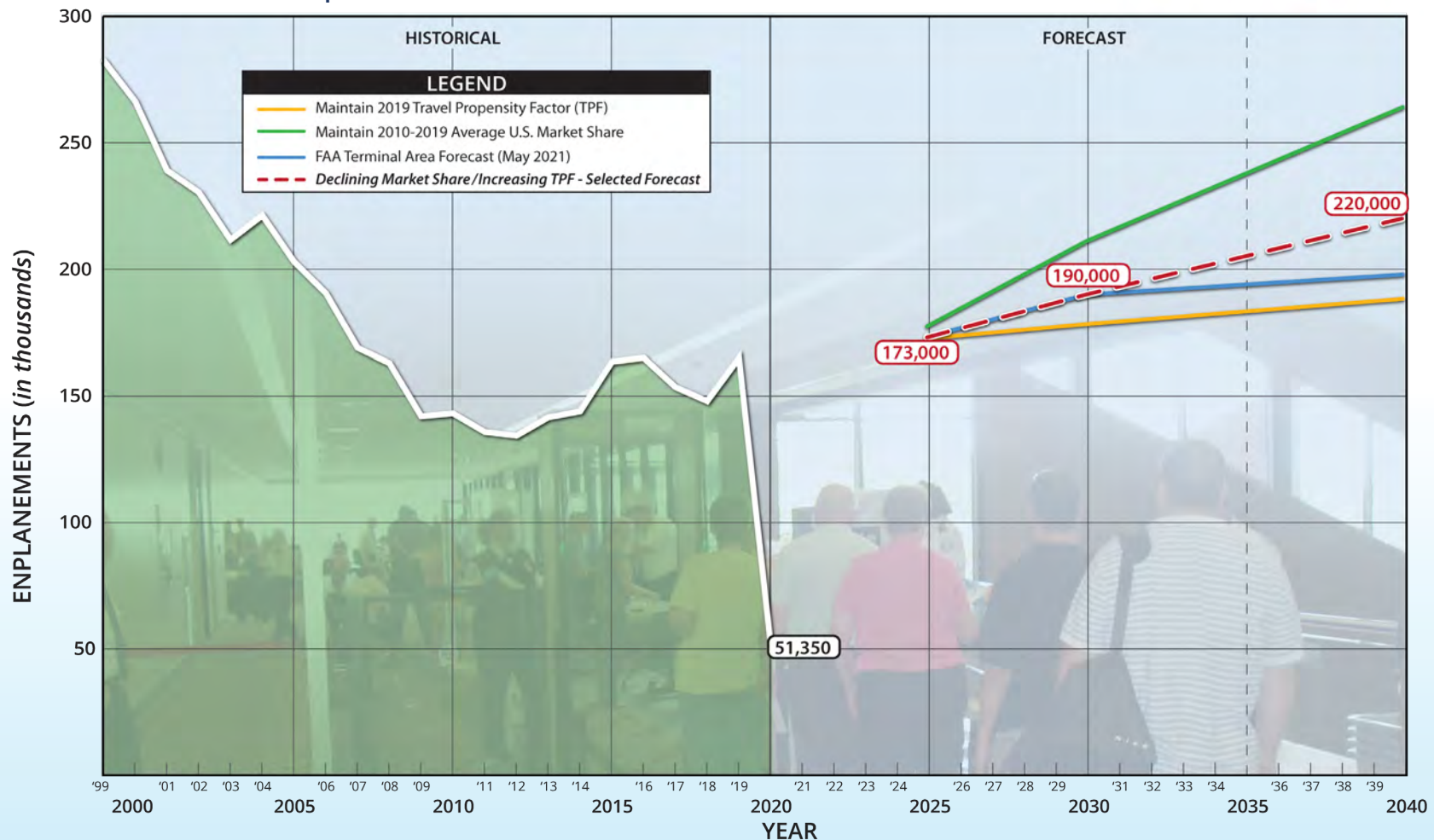
Scheduled Enplanements - Bureau of Transportation Statistics T-100 Market data.

Mileage - Google Maps





Exhibit 2D: Enplanement Forecast



# LINCOLN AIRPORT

## AIRPORT MASTER PLAN



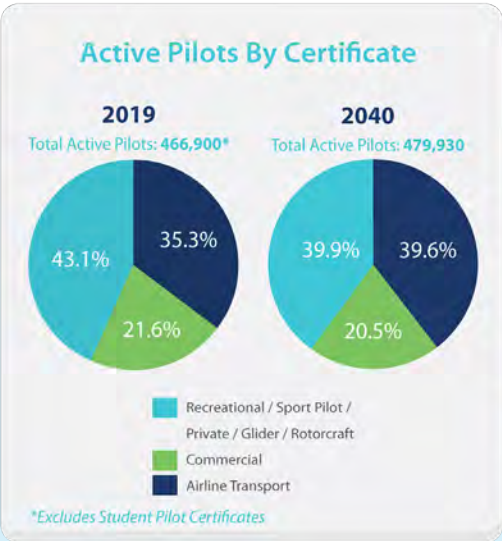
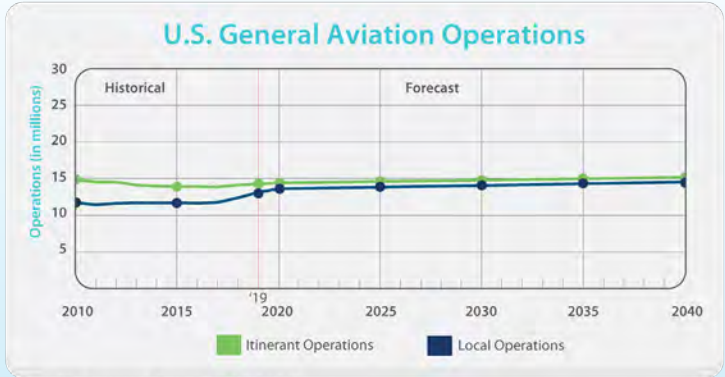
Table 2H:  
Scheduled Airline Fleet Mix and  
Operations Forecast

FLEET MIX		ACTUAL			
Seat Capacity	Typical Aircraft	2007	2011	2015	2019
115+	A319; A220-300; B737-300	3.5%	0.0%	0.0%	0.0%
91-114	A220-100; ERJ 190	0.0%	0.0%	0.0%	0.0%
71-90	CRJ 900; ERJ 175	0.1%	0.0%	8.3%	9.4%
60-70	CRJ 700; ERJ 170	9.4%	2.8%	3.5%	0.7%
50-59	CRJ 200, 550; ERJ 145	87.0%	97.1%	88.2%	89.9%
40-49	ERJ 140	0.0%	0.0%	0.0%	0.0%
20-39	EMB 120; ERJ 135	0.0%	0.1%	0.0%	0.0%
10-19	B1900	0.0%	0.0%	0.0%	0.0%
Total		100.0%	100.0%	100.0%	100.0%
Average Seats per Departures		55.4	50.5	52.9	52.6
Boarding Load Factor		70.8%	71.3%	82.1%	84.1%
Enplanements per Departure		39.2	36.0	43.4	44.2
Annual Enplanements		166,239	120,286	155,102	162,611
Annual Departures		4,239	3,339	3,572	3,678
Annual Operations		8,478	6,678	7,144	7,356
FLEET MIX		FORECAST			
Seat Capacity	Typical Aircraft	2025	2030	2040	High Range
115+	A319; A220-300; B737-300	0.0%	0.0%	0.0%	10.0%
91-114	A220-100; ERJ 190	0.0%	0.0%	0.0%	10.0%
71-90	CRJ 900; ERJ 175	10.0%	10.0%	30.0%	20.0%
60-70	CRJ 700; ERJ 170	10.0%	20.0%	20.0%	20.0%
50-59	CRJ 200, 550; ERJ 145	80.0%	70.0%	50.0%	40.0%
40-49	ERJ 140	0.0%	0.0%	0.0%	0.0%
20-39	EMB 120; ERJ 135	0.0%	0.0%	0.0%	0.0%
10-19	B1900	0.0%	0.0%	0.0%	0.0%
Total		100.0%	100.0%	100.0%	100.0%
Average Seats per Departures		54.6	56.6	61.8	73.1
Boarding Load Factor		85.0%	85.0%	85.0%	85.0%
Enplanements per Departure		46.4	48.1	52.5	62.1
Annual Enplanements		168,000	185,000	215,000	255,000
Annual Departures		3,620	3,850	4,090	4,100
Annual Operations		7,240	7,700	8,180	8,200
60+ Seats		20.0%	30.0%	50.0%	60.0%
10-59 Seats		80.0%	70.0%	50.0%	40.0%
60+ Seats		1,448	2,310	4,090	4,920
10-59 Seats		5,792	5,390	4,090	3,280





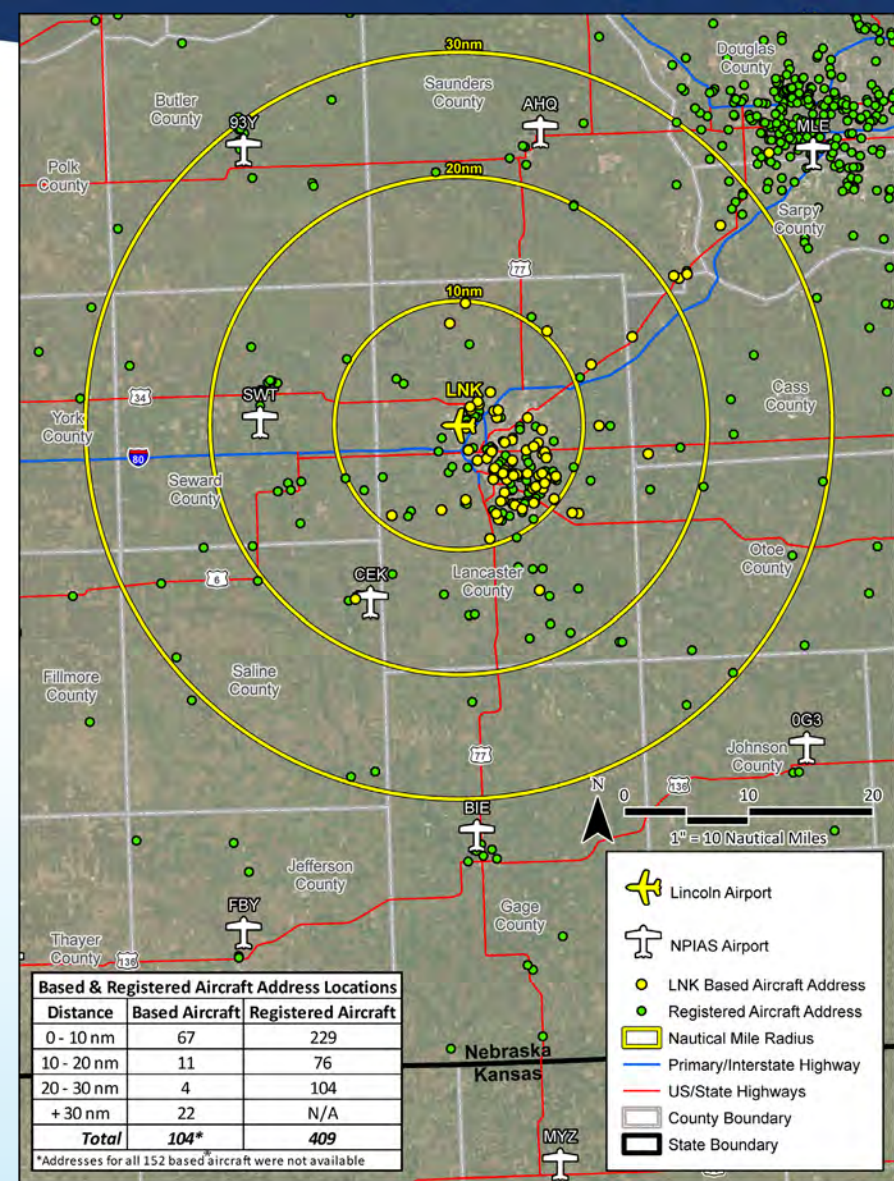
### Exhibit 2E: National General Aviation/Air Taxi Forecasts



# LINCOLN AIRPORT

## AIRPORT MASTER PLAN

Exhibit 2F:  
Registered/Based Aircraft Locations





# LINCOLN AIRPORT

## AIRPORT MASTER PLAN

Figure: Based Aircraft Forecast

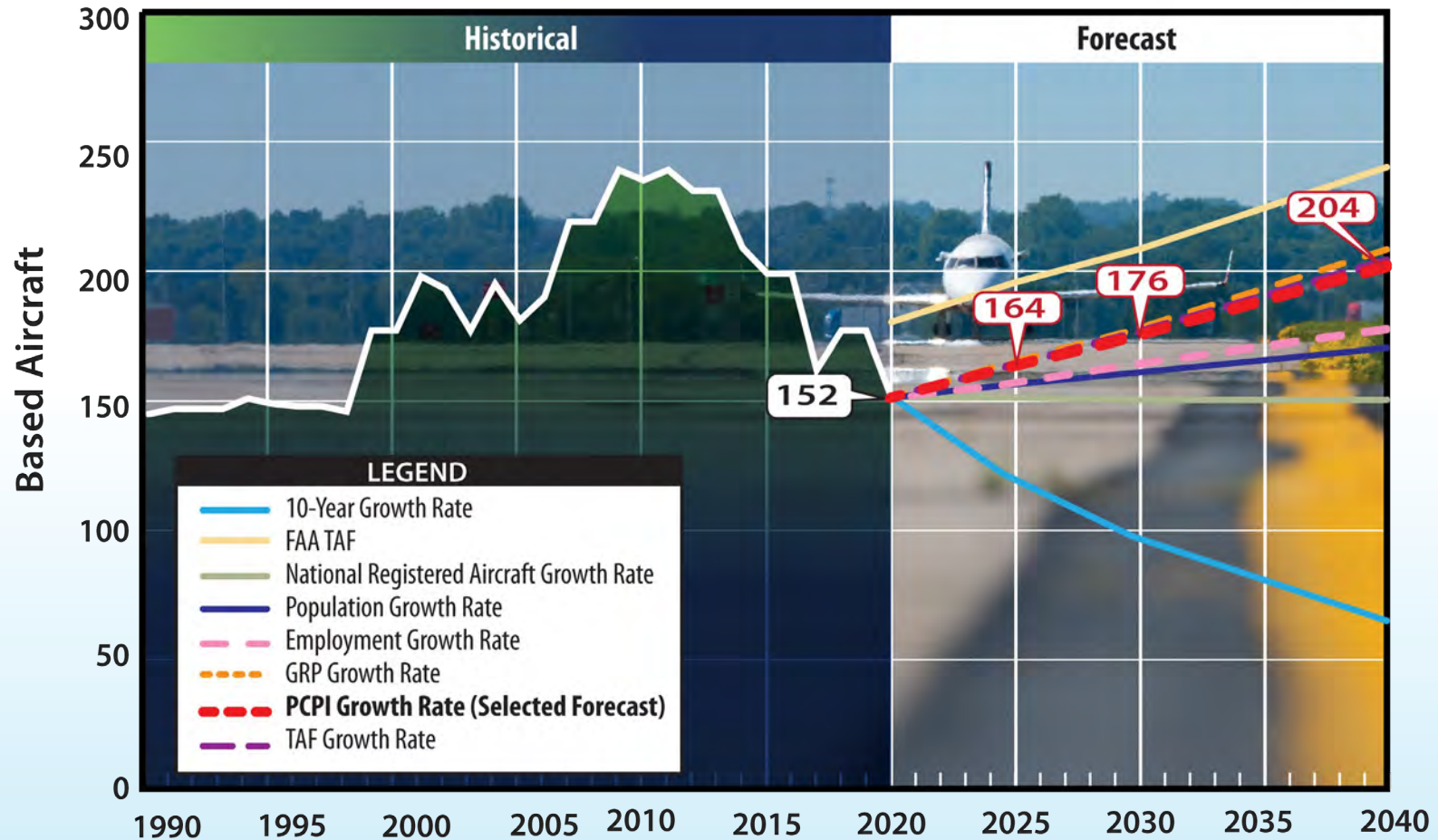




Figure: General Aviation Itinerant Operations Forecast

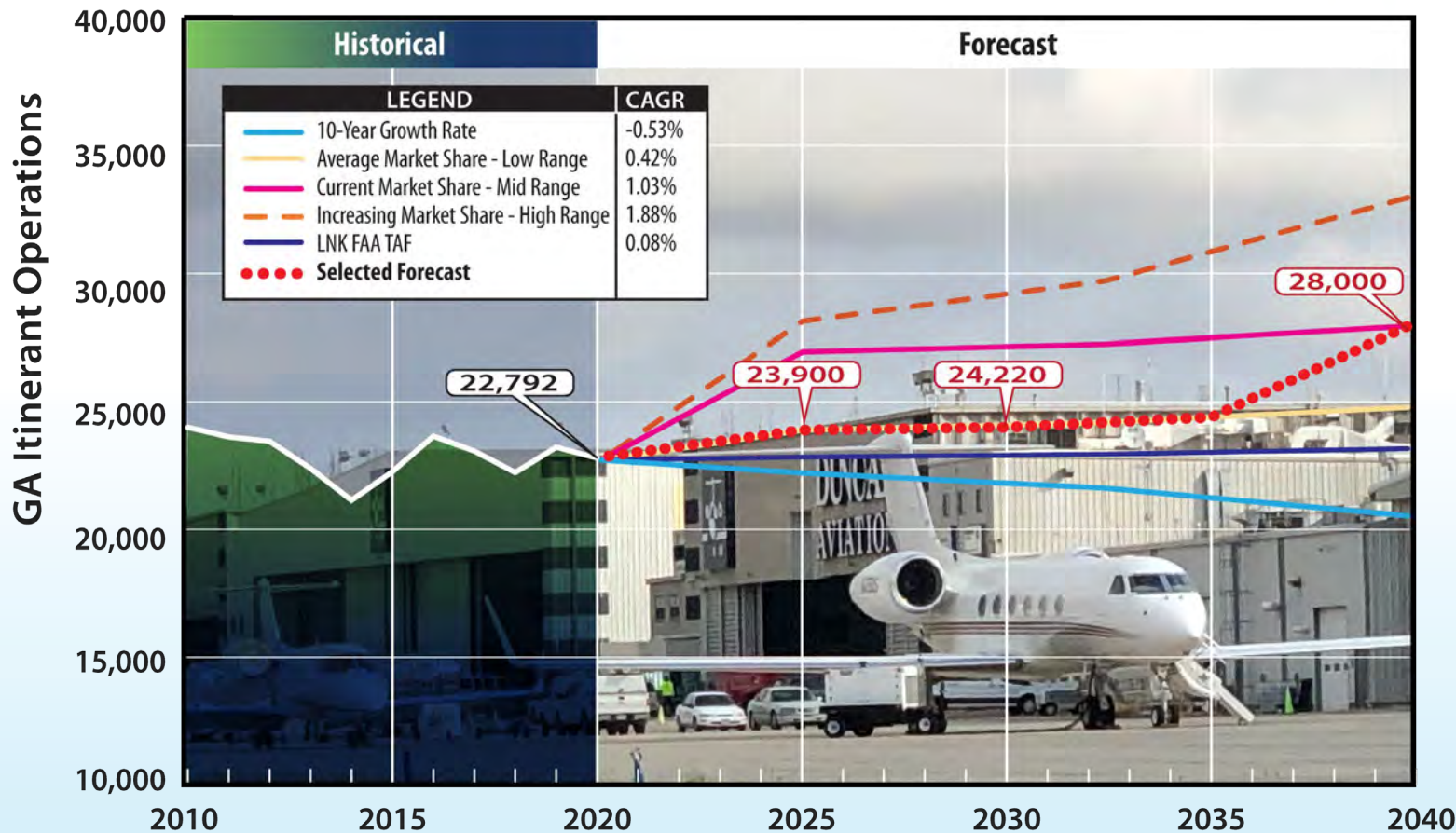
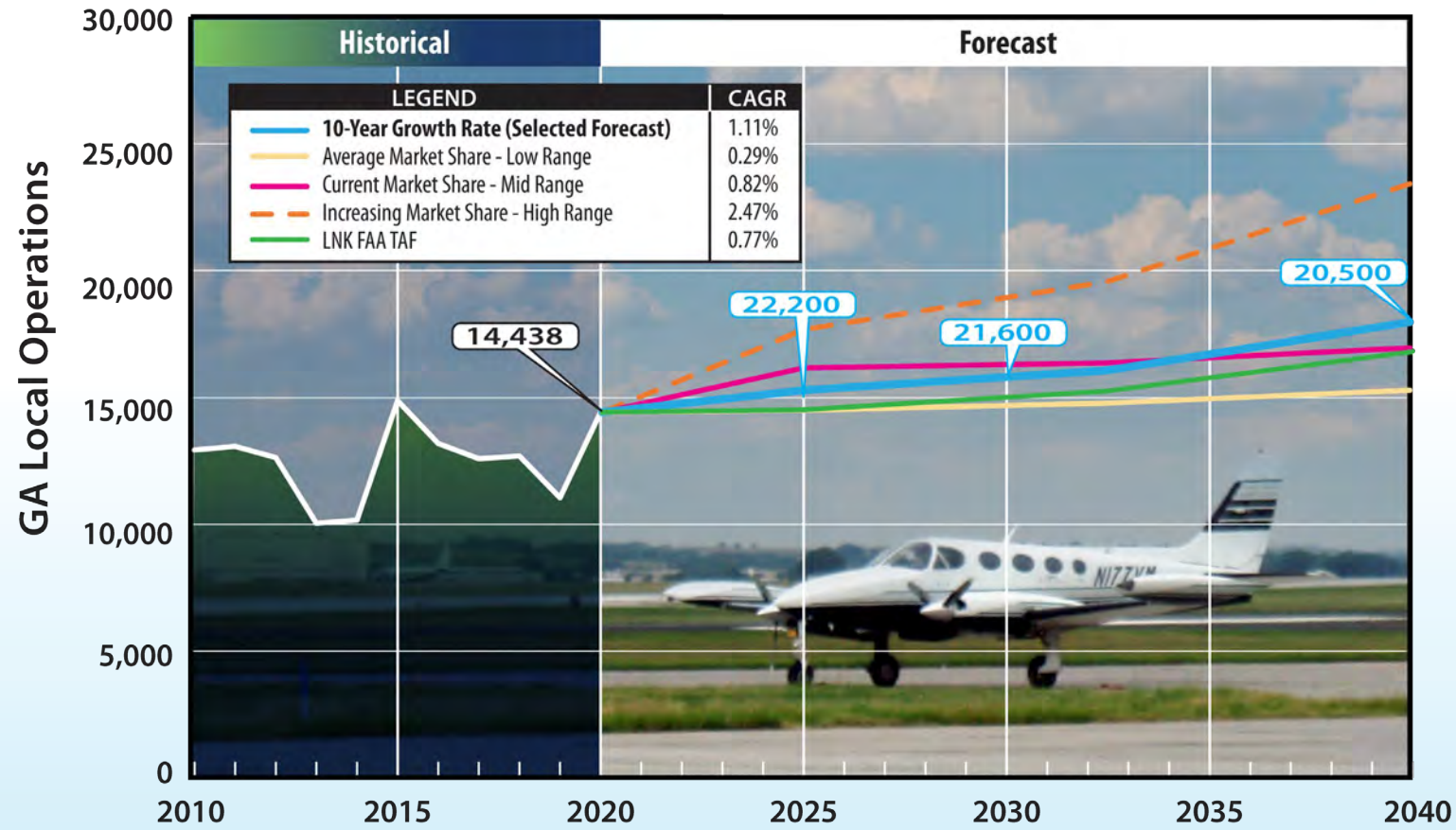


Figure: General Aviation Local Operations Forecast

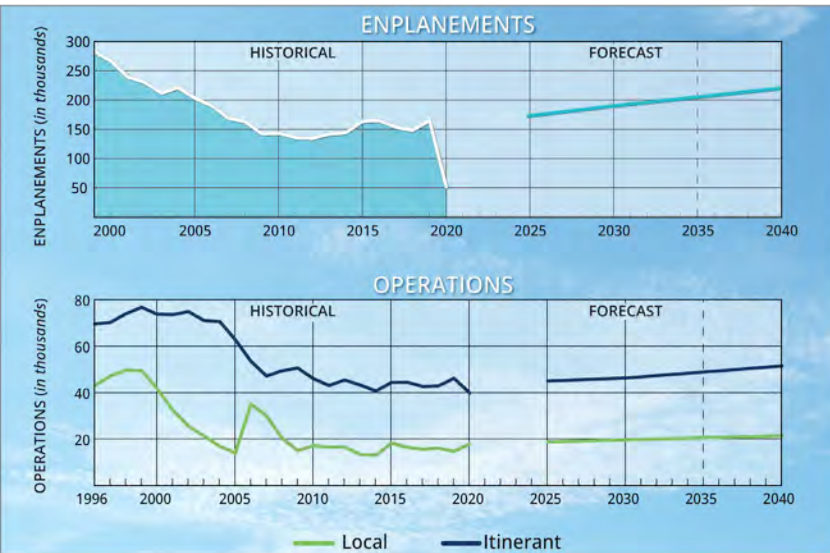


# LINCOLN AIRPORT

## AIRPORT MASTER PLAN



### Exhibit 2G: Forecasts Summary

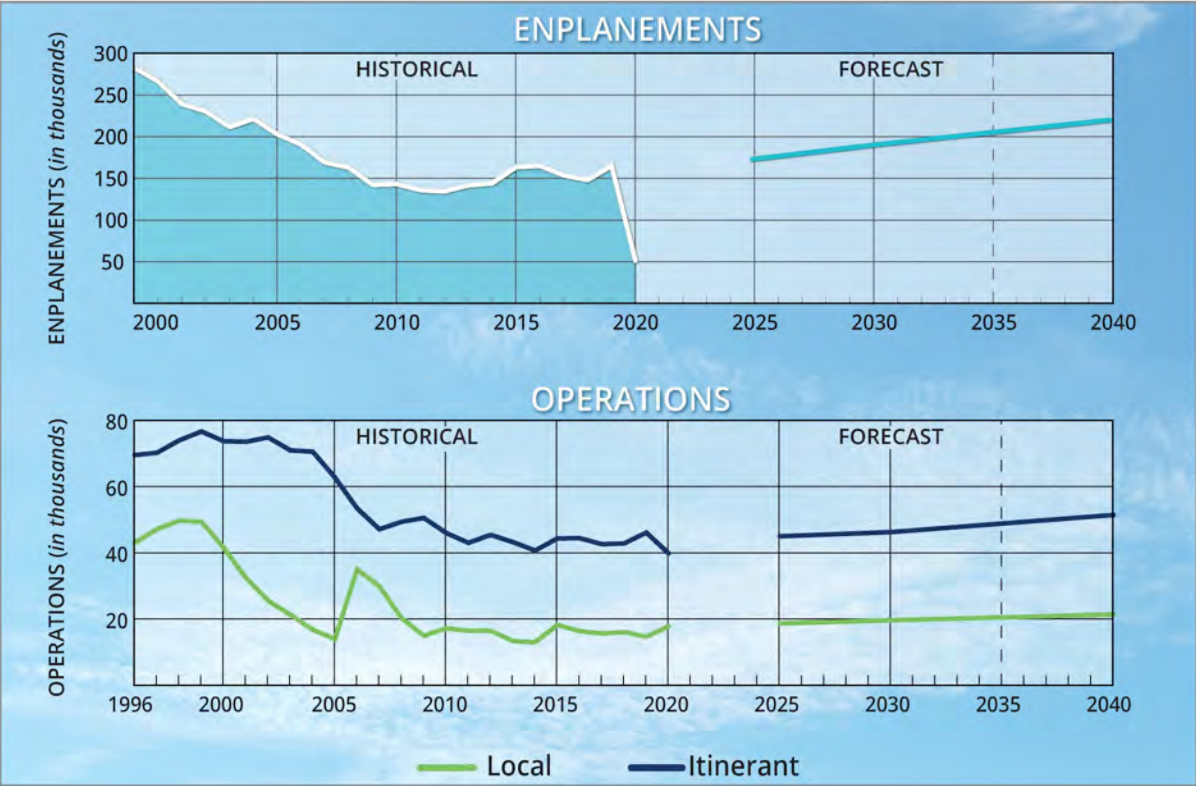


	BASE 2020	FORECAST		
		2025	2030	2040
<b>ENPLANEMENTS</b>	<b>51,350</b>	<b>173,000</b>	<b>190,000</b>	<b>220,000</b>
<b>OPERATIONS</b>				
<i><b>Itinerant</b></i>				
Air Carrier	512	1,448	2,310	4,090
Air Taxi	9,166	12,392	12,490	12,090
General Aviation	22,792	23,900	24,200	28,000
Military	7,356	7,230	7,230	7,230
<b>Subtotal</b>	<b>39,826</b>	<b>44,970</b>	<b>46,230</b>	<b>51,410</b>
<i><b>Local</b></i>				
General Aviation	14,438	15,300	16,100	18,000
Military	3,356	3,356	3,356	3,356
<b>Subtotal</b>	<b>17,794</b>	<b>18,656</b>	<b>19,456</b>	<b>21,356</b>
<b>Total Operations</b>	<b>57,620</b>	<b>63,626</b>	<b>65,686</b>	<b>72,766</b>
<b>TOTAL OPERATIONS PEAKING</b>				
Annual Operations	57,620	63,626	65,686	72,766
Peak Month	5,896	6,511	6,721	7,446
Busy Day	277	306	316	350
Design Day	194	214	221	245
Design Hour	10	11	12	13
Peak Hour	24	26	27	30
<b>CIVILIAN BASED AIRCRAFT</b>				
Single-Engine Piston	115	121	121	133
Multi-Engine (Piston/Turbine)	14	16	19	23
Jet	21	24	31	40
Helicopter	2	3	5	8
<b>Total Civilian Based Aircraft</b>	<b>152</b>	<b>164</b>	<b>176</b>	<b>204</b>





Exhibit 2G:  
Forecasts Summary



ENPLANEMENTS
OPERATIONS
Itinerant
Air Carrier
Air Taxi
General Aviation
Military
Subtotal
Local
General Aviation
Military
Subtotal
Total Operations
TOTAL OPERATIONS PER
Annual Operations
Peak Month
Busy Day
Design Day
Design Hour
Peak Hour
CIVILIAN BASED AIRCRAFT
Single-Engine Piston
Multi-Engine (Piston/Turboprop)
Jet
Helicopter



### Exhibit 2H: Aircraft Reference Codes

<div>A-I</div> <div></div>	<div>Aircraft</div> <div><ul style="list-style-type: none"><li>• Beech Baron 55</li><li>• Beech Bonanza</li><li>• Cessna 150, 172</li><li>• Eclipse 500</li><li>• Piper Archer, Seneca</li></ul></div> <div>TDG</div> <div><ul style="list-style-type: none"><li>1A</li><li>1A</li><li>1A</li><li>1A</li><li>1A</li></ul></div>	<div>B-II</div> <div><div>over 12,500 lbs.</div><div></div></div>	<div>Aircraft</div> <div><ul style="list-style-type: none"><li>• Beech Super King Air 350</li><li>• Cessna Citation CJ3(525B), Bravo (550), V (560)</li><li>• Cessna Citation CJ4 (525C)</li><li>• Cessna Citation Latitude/Longitude</li><li>• Embraer Phenom 300</li><li>• Falcon 10, 20, 50</li><li>• Falcon 900, 2000</li><li>• Hawker 800, 800XP, 850XP, 4000</li><li>• Pilatus PC-24</li></ul></div> <div>TDG</div> <div><ul style="list-style-type: none"><li>2</li><li>2</li><li>1B</li><li>1B</li><li>1B</li><li>1B</li><li>2</li><li>1B</li><li>1B</li></ul></div>	<div>C/D-II</div> <div></div>	<div>Aircraft</div> <div><ul style="list-style-type: none"><li>• Challenger 600/604/800/850</li><li>• Cessna Citation VII, X+</li><li>• Embraer Legacy 450/500</li><li>• Gulfstream IV, 350, 450 (D-II)</li><li>• Gulfstream G200/G280</li><li>• Lear 70, 75</li></ul></div> <div>TDG</div> <div><ul style="list-style-type: none"><li>1B</li><li>1B</li><li>1B</li><li>2</li><li>1B</li><li>1B</li></ul></div>	<div>C/D-IV</div> <div></div>	<div>Aircraft</div> <div><ul style="list-style-type: none"><li>• Airbus A300-100, 200, 600</li><li>• Boeing 757-200</li><li>• Boeing 767-300, 400</li><li>• MD-11</li></ul></div> <div>TDG</div> <div><ul style="list-style-type: none"><li>5</li><li>4</li><li>5</li><li>6</li></ul></div>
<div>B-I</div> <div></div>	<div>Aircraft</div> <div><ul style="list-style-type: none"><li>• Beech Baron 58</li><li>• Beech King Air 90</li><li>• Cessna 421</li><li>• Cessna Citation CJ1 (525)</li><li>• Cessna Citation I(500)</li><li>• Embraer Phenom 100</li></ul></div> <div>TDG</div> <div><ul style="list-style-type: none"><li>1A</li><li>1A</li><li>1A</li><li>1A</li><li>2</li><li>1B</li></ul></div>	<div>A/B-III</div> <div></div>	<div>Aircraft</div> <div><ul style="list-style-type: none"><li>• Bombardier Dash 8</li><li>• Bombardier Global 5000, 6000, 7000, 8000</li><li>• Falcon 6X, 7X, 8X</li></ul></div> <div>TDG</div> <div><ul style="list-style-type: none"><li>3</li><li>2</li><li>2</li></ul></div>	<div>C/D-III</div> <div><div>less than 150,000 lbs.</div><div></div></div>	<div>Aircraft</div> <div><ul style="list-style-type: none"><li>• Gulfstream V</li><li>• Gulfstream G500, 550, 600, 650 (D-III)</li></ul></div> <div>TDG</div> <div><ul style="list-style-type: none"><li>2</li><li>2</li></ul></div>	<div>D-V</div> <div></div>	<div>Aircraft</div> <div><ul style="list-style-type: none"><li>• Airbus A330-200, 300</li><li>• Airbus A340-500, 600</li><li>• Boeing 747-100 - 400</li><li>• Boeing 777-300</li><li>• Boeing 787-8, 9</li></ul></div> <div>TDG</div> <div><ul style="list-style-type: none"><li>5</li><li>6</li><li>5</li><li>6</li><li>5</li></ul></div>
<div>A/B-II</div> <div><div>12,500 lbs. or less</div><div></div></div>	<div>Aircraft</div> <div><ul style="list-style-type: none"><li>• Beech Super King Air 200</li><li>• Cessna 441 Conquest</li><li>• Cessna Citation CJ2 (525A)</li><li>• Pilatus PC-12</li></ul></div> <div>TDG</div> <div><ul style="list-style-type: none"><li>2</li><li>1A</li><li>2</li><li>1A</li></ul></div>	<div>C/D-I</div> <div></div>	<div>Aircraft</div> <div><ul style="list-style-type: none"><li>• Lear 25, 31, 45, 55, 60</li><li>• Learjet 35, 36 (D-I)</li></ul></div> <div>TDG</div> <div><ul style="list-style-type: none"><li>1B</li><li>1B</li></ul></div>	<div>C/D-III</div> <div><div>over 150,000 lbs.</div><div></div></div>	<div>Aircraft</div> <div><ul style="list-style-type: none"><li>• Airbus A319-100, 200</li><li>• Boeing 737 -800, 900, BBJ2 (D-III)</li><li>• MD-83, 88 (D-III)</li></ul></div> <div>TDG</div> <div><ul style="list-style-type: none"><li>3</li><li>3</li><li>4</li></ul></div>		





### Exhibit 2j: Historical Turboprop and Jet Operations

#### AIRPORT REFERENCE CODE (ARC) SUMMARY

ARC	2011	2012	2013	2014	2015	2016	2017	2018	2019	2020
A-I	72	82	66	62	82	76	90	92	102	132
B-I	1,662	1,702	1,516	1,370	1,486	1,418	1,422	1,450	1,554	1,428
B-II	3,268	2,998	3,396	3,884	4,138	4,288	4,622	5,260	5,812	4,708
B-III	24	24	32	82	144	178	216	240	200	186
C-I	916	806	778	730	682	640	698	638	548	450
C-II	8,138	7,594	7,456	7,610	7,778	7,806	6,780	6,946	7,856	4,062
C-III	112	102	82	314	668	604	1,556	1,008	786	480
C-IV	1,096	1,312	1,154	1,034	1,186	972	880	906	986	828
C-V	2	2	0	0	0	0	4	16	4	0
C-VI	4	0	0	0	0	0	0	14	0	4
D-I	994	1,222	970	544	698	664	768	570	490	288
D-II	136	100	108	122	134	124	172	172	184	104
D-III	60	88	110	98	136	132	130	114	134	108
D-IV	6	6	0	4	0	12	0	4	2	10
D-V	76	124	86	68	88	40	12	34	30	38
E-I	12	0	2	2	6	6	2	22	10	14
<b>TOTAL</b>	<b>16,578</b>	<b>16,162</b>	<b>15,756</b>	<b>15,924</b>	<b>17,226</b>	<b>16,960</b>	<b>17,352</b>	<b>17,486</b>	<b>18,698</b>	<b>12,840</b>



# Exhibit 2K: Existing and Ultimate Critical Design Aircraft



**AIRBUS A320**



**BOEING 737-900 with WINGLETS**



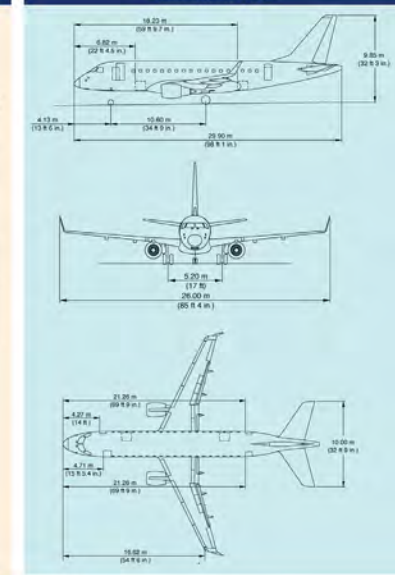
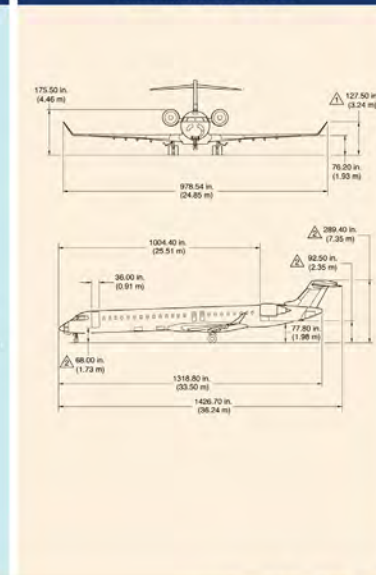
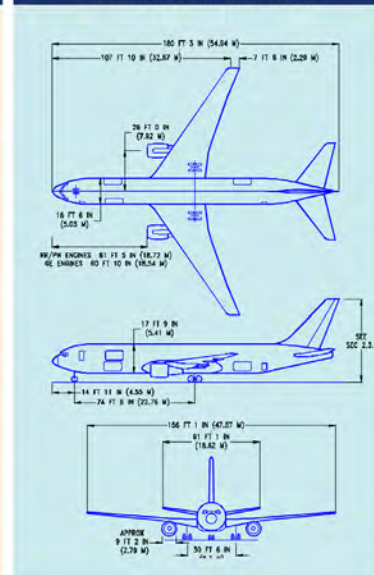
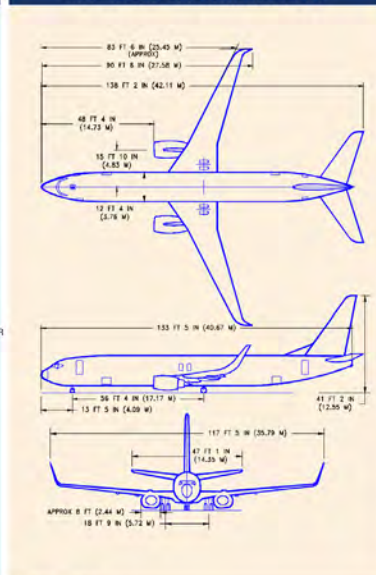
**BOEING 767-300 FREIGHTER**



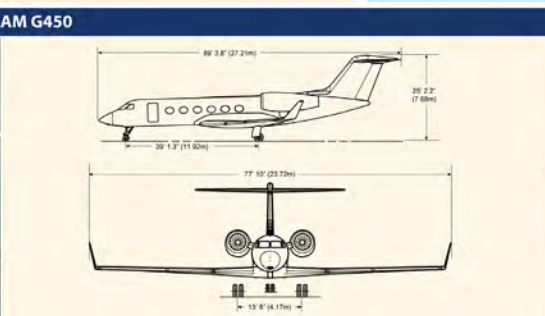
**BOMBARDIER CRJ-900**



**EMBRAER 170**



**GULFSTREAM G450**



**BOEING KC-135 STRATOTANKER**

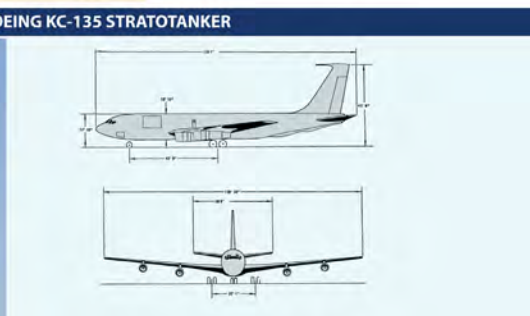


Exhibit 2K: Existing and Ultimate Critical Design Aircraft



FREIGHTER



BOMBARDIER CRJ-900



EMBRAER 170

EXISTING – RUNWAY 18-36 AIP/PFC ELIGIBLE  
EXISTING/ULTIMATE RUNWAY 14-32

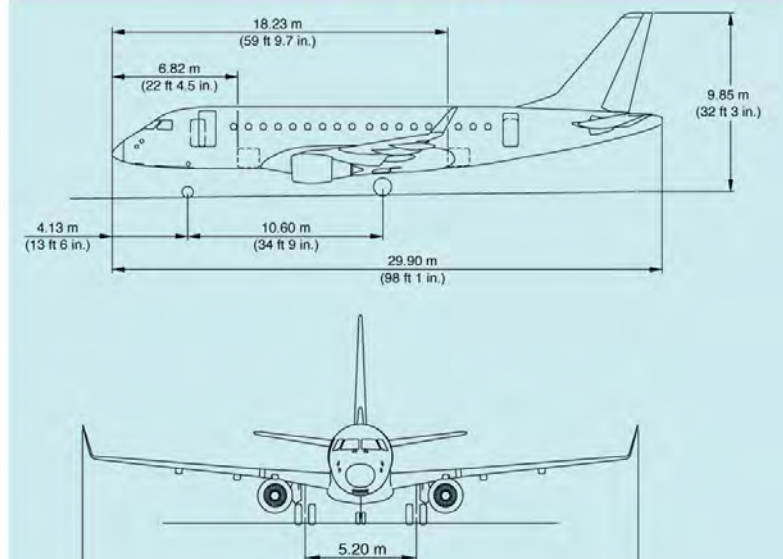
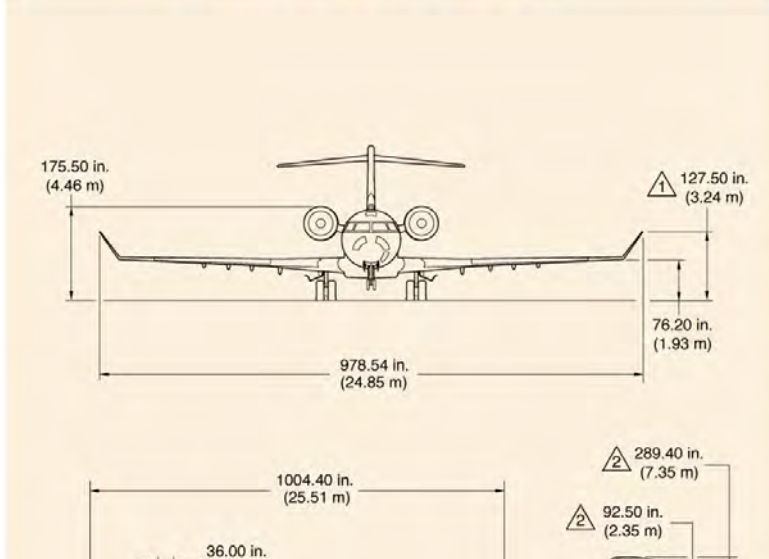
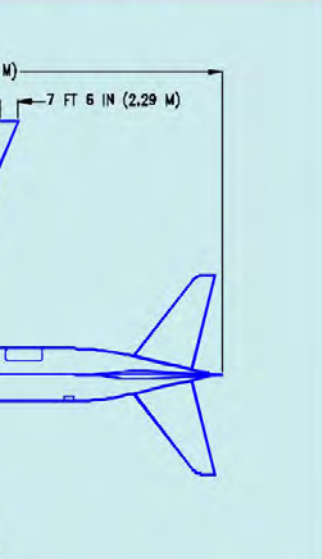




Exhibit 2K: Existing and Ultimate Critical Design Aircraft



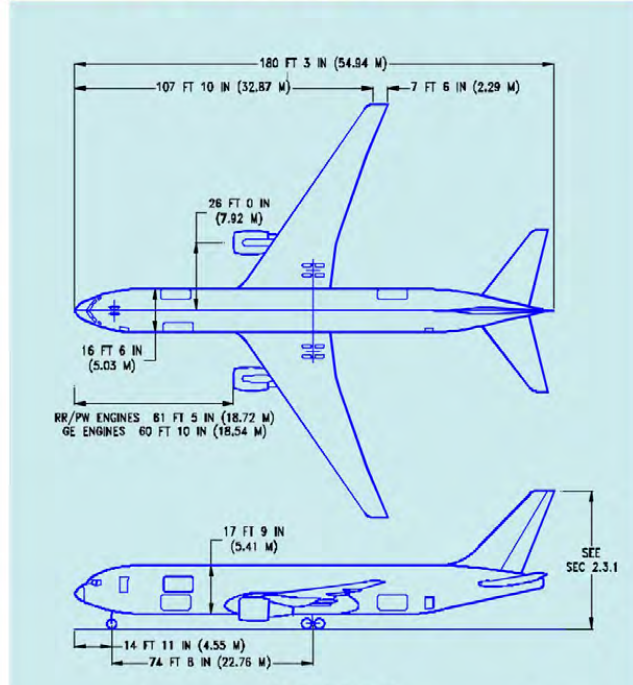
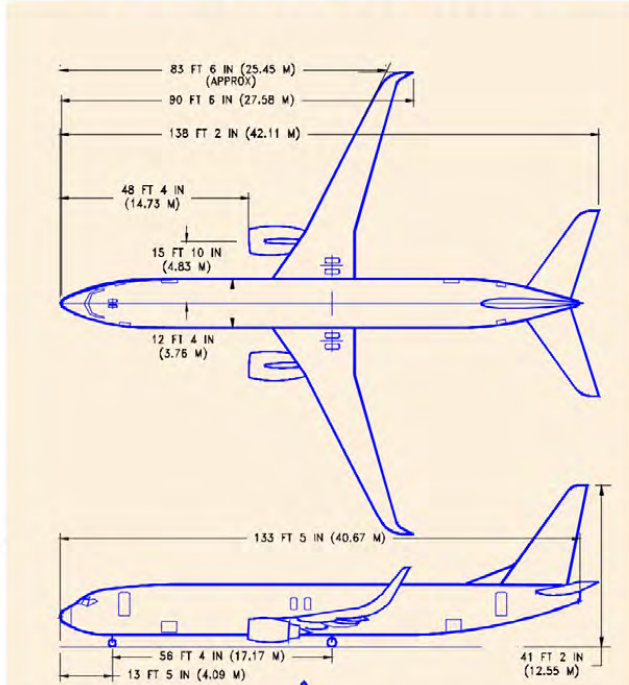
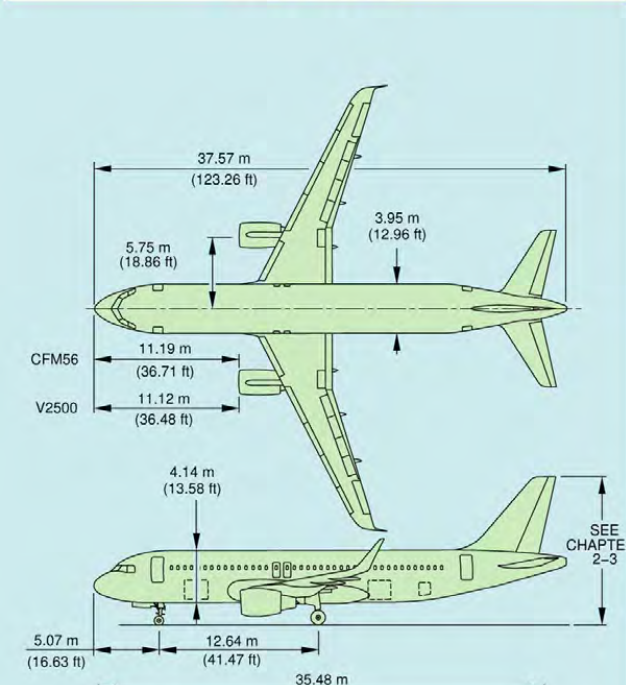
AIRBUS A320



BOEING 737-900 with WINGLETS

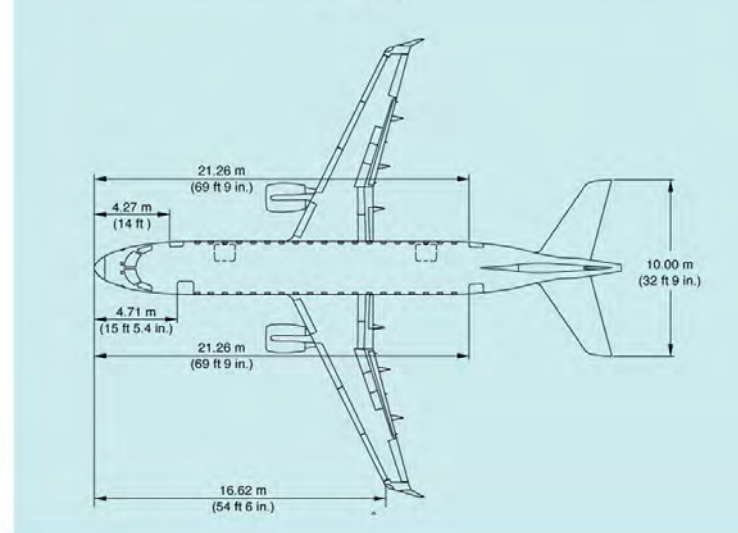
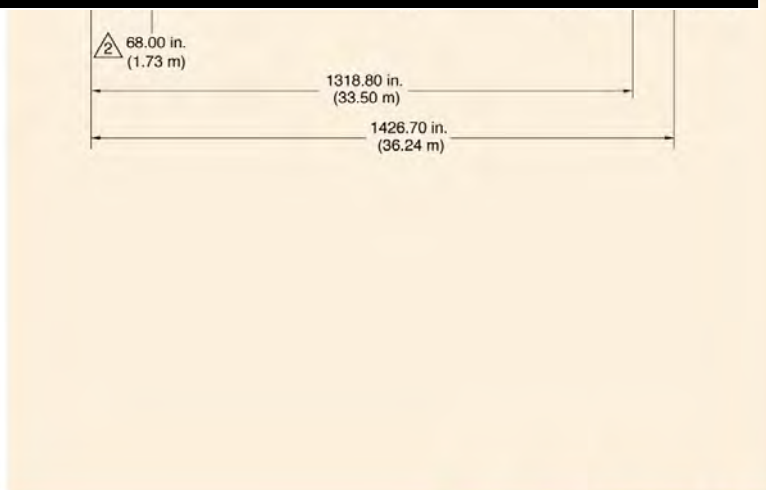
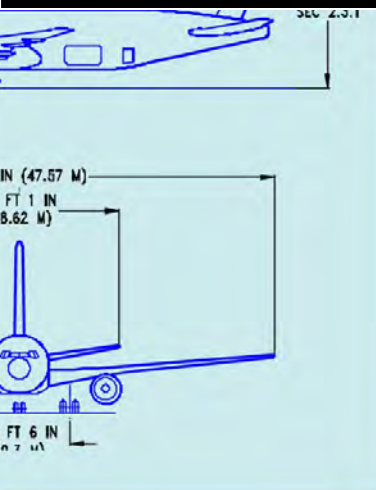


BOEING 767-300 FREIGHTER



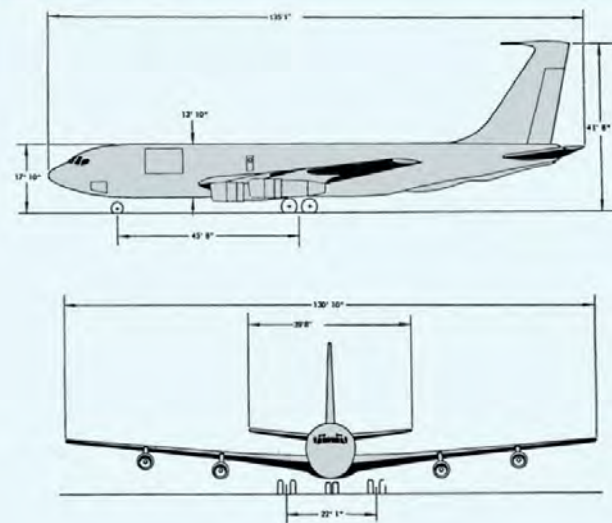


# Exhibit 2K: Existing and Ultimate Critical Design Aircraft

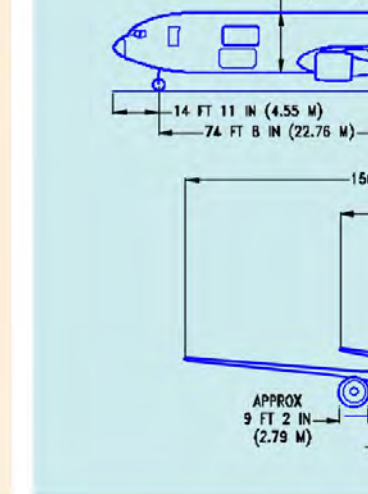
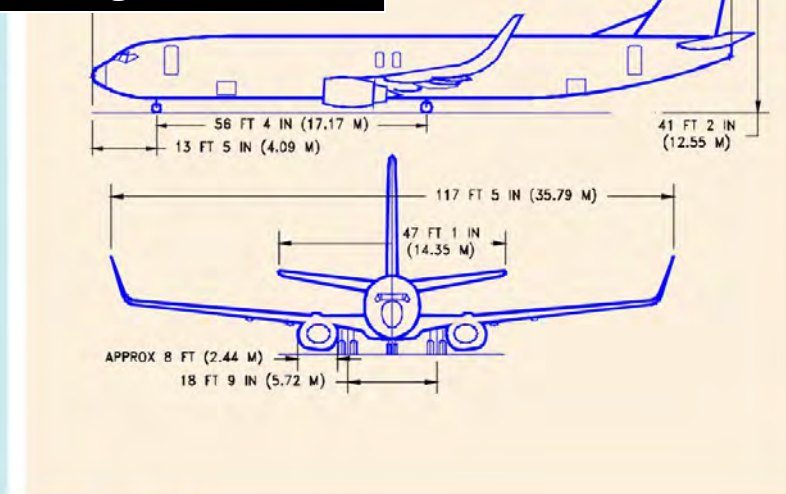
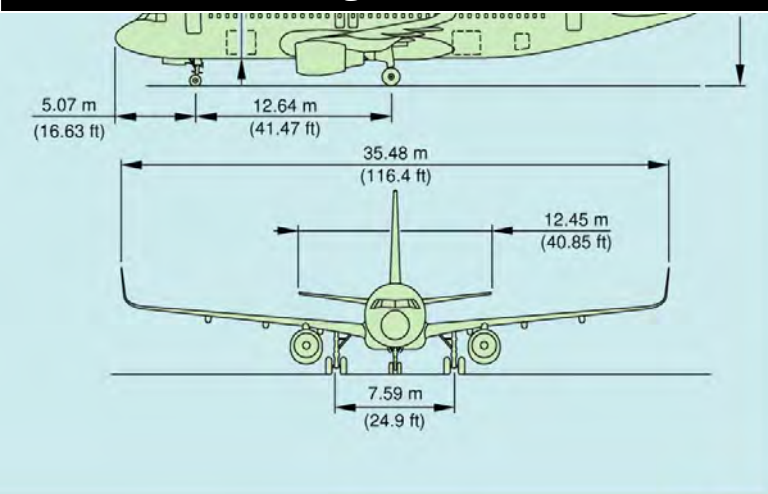


## BOEING KC-135 STRATOTANKER

**EXISTING/ULTIMATE – RUNWAY 18-36  
PLANNING ONLY  
(MILITARY)**

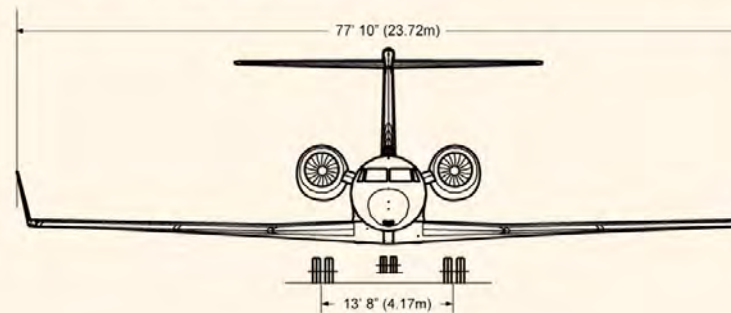
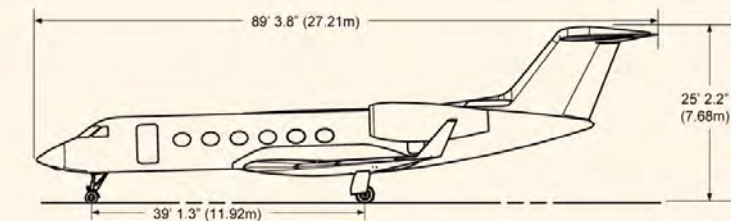


# Exhibit 2K: Existing and Ultimate Critical Design Aircraft



## GULFSTREAM G450

**EXISTING/ULTIMATE –  
RUNWAY 17-35 AIP/PFC**



# LINCOLNAIRPORT



?

?

?

?

?

?

?

?

# QUESTIONS?





# NEXT STEPS



- 1. Facility Requirements**
- 2. Alternatives**

# LINCOLN AIRPORT

AIRPORT MASTER PLAN



Exhibit 1K:  
Building Lease Map - East



Building Number	Common Name	Current Use	Sq Ft Total	Building Number	Common Name	Current Use	Sq Ft Total	Building Number	Common Name	Current Use	Sq Ft Total
5302	Air Traffic Control Tower (ATCT)	Air Traffic Control Tower	6,936	5640	Duncan A (Old Jensen) Hangar	Fixed Base Operation Hangar	12,960	5790	U-Row Hangar	Hangar	8,160
5303	Air Traffic Control - Offices	Air Traffic Control Offices	2,494	5700	Duncan Fuel Farm	Fuel Farm	88,000	5793	V-Row Hangar	End Unit	1,134
5304	Administrative/Terminal Building	Terminal Building	66,613	5702	Ross Aviation	Fuel Farm	0	5793	V-Row Hangar	Hangar	10,720
5306	Air Freight Building	LAA Storage	2,400	5737	Duncan G and H -			5794	W-Row Hangar	End Unit	1,134
5306	Air Freight Building	Air Freight Building	25,300		Large Maintenance Hangar	General Aircraft Maintenance	125,709	5794	W-Row Hangar	Hangar	10,720
5308	Terminal Parking Structure	Terminal Parking Garage	177,720	5750	K-Row Hangar	Hangar	11,564	5800	Corporate Hangar	Hangar	5,525
5440	Rental Car Service Area	Vehicle Maintenance	6,000	5750	K-Row Hangar	Hangar/Storage	588	5801	Corporate Hangar	Hangar	4,550
5580	Duncan Paint Hangar	Painting and Stripping	137,490	5756	Corporate Hangar	Wash Rack	5,770	5803	Corporate Hangar	Hangar	4,550
5590	General Aviation (Admin) Building	Nation Air Insurance	2,043	5760	Maintenance Hangar	Cabinet Finish Shop	7,854	5805	Corporate Hangar	Hangar	8,135
5590	General Aviation (Admin) Building	FAA Airways Facility	1,912	5765	Hazardous Storage	Flammable Storage Building	576	5810	Corporate Hangar	Hangar	12,197
5590	General Aviation (Admin) Building	Nebraska Department of Aeronautics	6,505	5767	Gas Regulator Building	Gas Regulator Building	177	5816	B-Row Hangar	Hangar	13,481
5590	General Aviation (Admin) Building	FAA Flight Standards District Office	8,366	5770	L-Row Hangar	Hangar/Storage	11,319	5816	B-Row Hangar	End Unit	518
5595	Duncan Spill Pit	Spill Pit	1,600	5771	M-Row Hangar	Hangar	8,978	5818	A-Row Hangar	End Unit	1,036
5597	Hazardous Storage Building	Hazardous Storage Building	1,600	5774	N-Row Hangar	Hangar	11,760	5818	A-Row Hangar	Hangar	10,370
5600	Aircraft Paint Facility Bays 1 and 2	Paint Bays	18,819	5775	O-Row Hangar	Hangar	11,910	5820	Corporate Hangar	Hangar	14,400
5604	Duncan E and F - Fixed Base			5775	O-Row Hangar	Hangar/Storage	271	5822	Corporate Hangar	Hangar	14,400
5608	Operation Hangar	Main Hangar	75,670	5778	P-Row Hangar	Hangar	11,297	5870	State Patrol Hangar	Hangar	10,600
	Duncan D Maintenance and Modification Hangar	Office/Hangar	96,900	5778	P-Row Hangar	Hangar/Storage	191	5910	C-Row Hangar	End Unit	408
5610	Duncan C Maintenance Hangar	Hangar	35,875	5779	Q-Row Hangar	Hangar/Storage	196	5910	C-Row Hangar	Hangar	7,587
5614	Aircraft Paint Facility	Offices/Hangar	23,200	5779	Q-Row Hangar	Hangar	11,420	5920	D-Row Hangar	End Unit	410
5617	Fixed Base Operation Hangar	Paint Building	15,600	5785	R-Row Hangar	Hangar	14,302	5920	D-Row Hangar	Hangar	7,587
5620	Fixed Base Operation Hangar	Offices/Hangar	19,600	5786	S-Row Hangar	Hangar/Storage	370	5930	E-Row Hangar	Hangar	7,587
5625	Duncan B (Flight Department) Hangar	FBO Offices/Hangar	13,000	5786	S-Row Hangar	Hangar	9,558	5930	E-Row Hangar	End Unit	410
				5789	T-Row Hangar	Hangar	14,880	5940	F-Row Hangar	End Unit	410
				5790	U-Row Hangar	Hangar/Storage	2,144	5940	F-Row Hangar	Hangar	6,744

0 800  
SCALE IN FEET

Aerial Photo: Nov 2020

**LEGEND**

- Airport Property Line
- Aviation Easement
- Building Lease



Exhibit 1L: Building Lease Map - West

Building Number	Common Name	Current Use	Sq Ft Total	Building Number	Common Name	Current Use	Sq Ft Total	Building Number	Common Name	Current Use	Sq Ft Total	Building Number	Common Name	Current Use	Sq Ft Total
200	Light Industrial/Manufacturing	Manufacturing	31,901	976	Storage	Storage	5,376	1445	New IAC Facility	Manufacturing and Office Space	173,000	2610	Storage Annex	Storage	1,500
300	Light Industrial/Warehouse/Vehicle Maintenance	Storage	12,519	977	Storage	Storage	1,478	1472	Vehicle Maintenance	Vehicle Maintenance/Storage	3,200	2620	Storage Annex	Storage	1,500
310	Light Industrial/Warehouse/Vehicle Maintenance	Truck/Trailer Painting and Body	2,500	978	Light Industrial/Commercial	Manufacturing	12,400	1476	Light Industrial/Warehouse	Office/Storage	4,370	2630	Storage Annex	Storage	1,500
320	Industrial/Commercial	Manufacturing	36,225	984	Storage	Storage	995	1480	Light Industrial/Commercial	Office/Manufacturing	10,098	2640	Storage Annex	Storage	1,500
801	Light Industrial/Commercial/Warehouse	Office/Storage	4,787	995	Industrial/Warehousing	Warehousing	53,750	1498	FAA Remote Transmitter Building	Remote Transmitter	749	2650	Storage Annex	Storage	1,500
820	Industrial/Commercial	Manufacturing	27,170	998	South Goodyear Hangar	Warehousing	94,342	1500	Light Industrial/Warehousing	Offices/Warehouse	80,268	2660	Storage Annex	Storage	1,500
830	Storage	Storage	1,000	1020	Light Industrial/Commercial	Storage	34,640	1550	LPD K-9 Training	Heavy Industry and Office	560	2699	Storage Annex	Storage	474
850	UNL Dept of Civil Engineering	Office	1,680	1024	Light Industrial/Commercial	Manufacturing	3,900	1560	Metal Recycling Yard	Storage Annex	18,000	2710	Storage Annex	Storage	2,000
865	Storage	Storage	20,400	1025	Warehouse	Warehouse	51,282	1580	Industrial/Commercial/Manufacturing/Warehousing	Storage Annex	90,629	2712	Storage Annex	Storage	1,500
870	University Test Facility Shop	Light Industrial/Office	0	1025	Old Jacob North Building	Manufacturing	60,124	1581	Warehousing	Office/Manufacturing	33,450	2714	Storage Annex	Storage	2,000
940	Nose Dock	Storage	27,751	1038	Commercial/Warehousing	Office/Warehouse	43,965	1600	Light Industrial/Warehousing	Warehouse	80,000	2716	Storage Annex	Storage	2,000
946	Nose Dock	Storage	22,751	1120	Light Industrial/Commercial	Storage	10,280	1742	Old Naval Reserve Building	Storage/Warehouse	17,724	2718	Storage Annex	Storage	2,000
948	Nose Dock	Storage	32,790	1134	Light Industrial/Vehicle Maintenance	Storage	22,514	1746	Naval Building Garage	Light Manufacturing	15,936	2720	Storage Annex	Storage	2,000
949	Industrial/Commercial/Aircraft Maintenance	Storage	7,820	1150	Light Industrial/Vehicle Maintenance	Storage	20,668	1804	Industrial/Commercial/Warehousing	Unknown	222	2732	Storage Annex	Storage	1,500
955	Office	Office	11,315	1230	Commercial/Warehousing	Office/Storage	10,944	1819	Light Industrial/Warehousing	Office/Manufacturing	173,673	2734	Storage Annex	Storage	2,000
956	North Goodyear Hangar	Storage/Warehouse/Commercial	92,968	1270	Commercial	Corrections Facility	31,917	2098	Laboratory Building	Storage/Warehouse	28,391	2736	Storage Annex	Storage	2,000
956	North Hangar Docks	Storage	12,025	1284	Light Industrial/Warehouse	Manufacturing	75,705	2167	Storage	Residential Garage	586	2738	Storage Annex	Storage	1,500
975	Light Industrial/Commercial/Warehouse	Manufacturing	21,100	1342	Light Industrial/Commercial/Warehousing	Warehouse	10,025	2168	Single Family Dwelling	Boat Building	1,233	2750	Storage Annex	Storage	5,000
				1344	State Patrol Crime Laboratory	Manufacturing/Office	31,000	2222	Telephone Facility	Telephone Switch Building	1,756	2762	Storage Annex	Storage	5,000
				1374	State Patrol Maintenance Building	Office	13,942	2266	Swimming Pool/Bath House	Swimming Pool	2,123	2790	Storage Annex - NET	Satellites	4,961
				1374	Light Industrial/Commercial	Manufacturing	24,000	2274	Light Industrial/Warehouse	Vacant	2,500	5001	Fire Station	Fire Station	11,400
					Old GTE Building	Manufacturing		2282	Church	Church	11,098	5002	Operations Building	Operations Building	38,741
								2360	Sports and Recreation Center	Gymnasium	20,601	5003	Vehicle Maintenance	Vehicle Maintenance	24,200

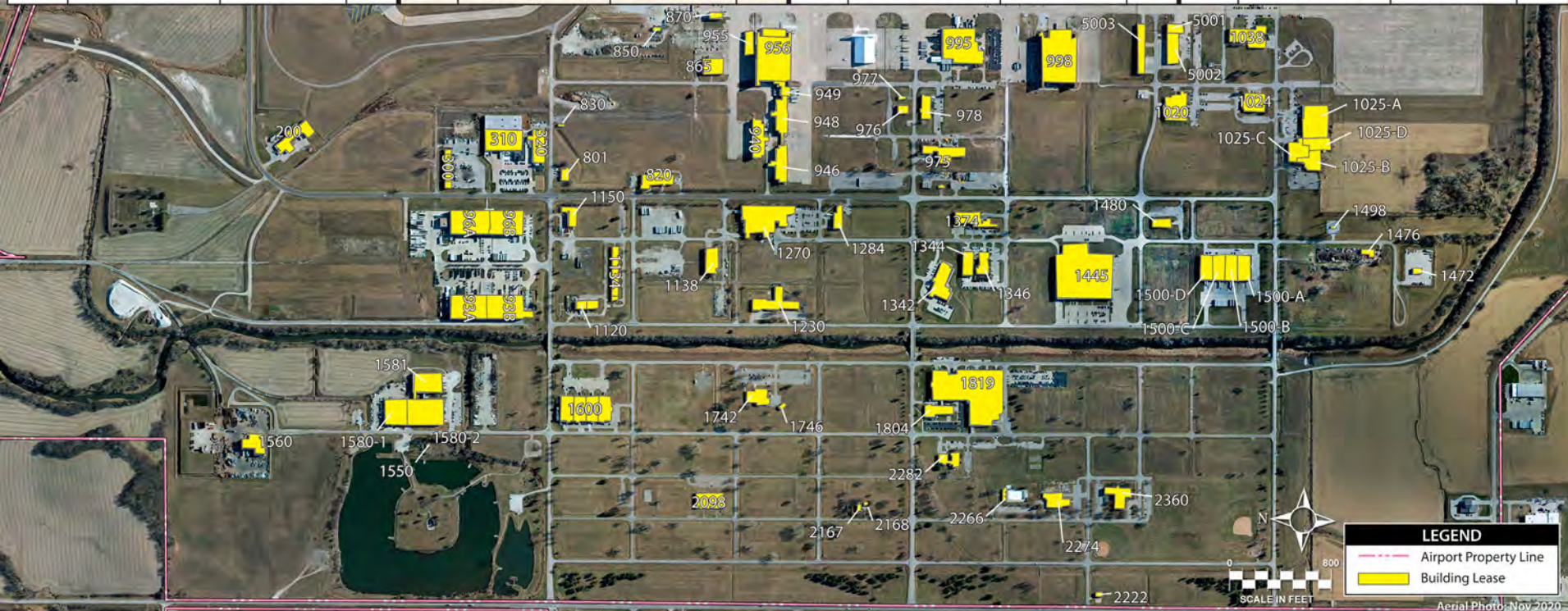




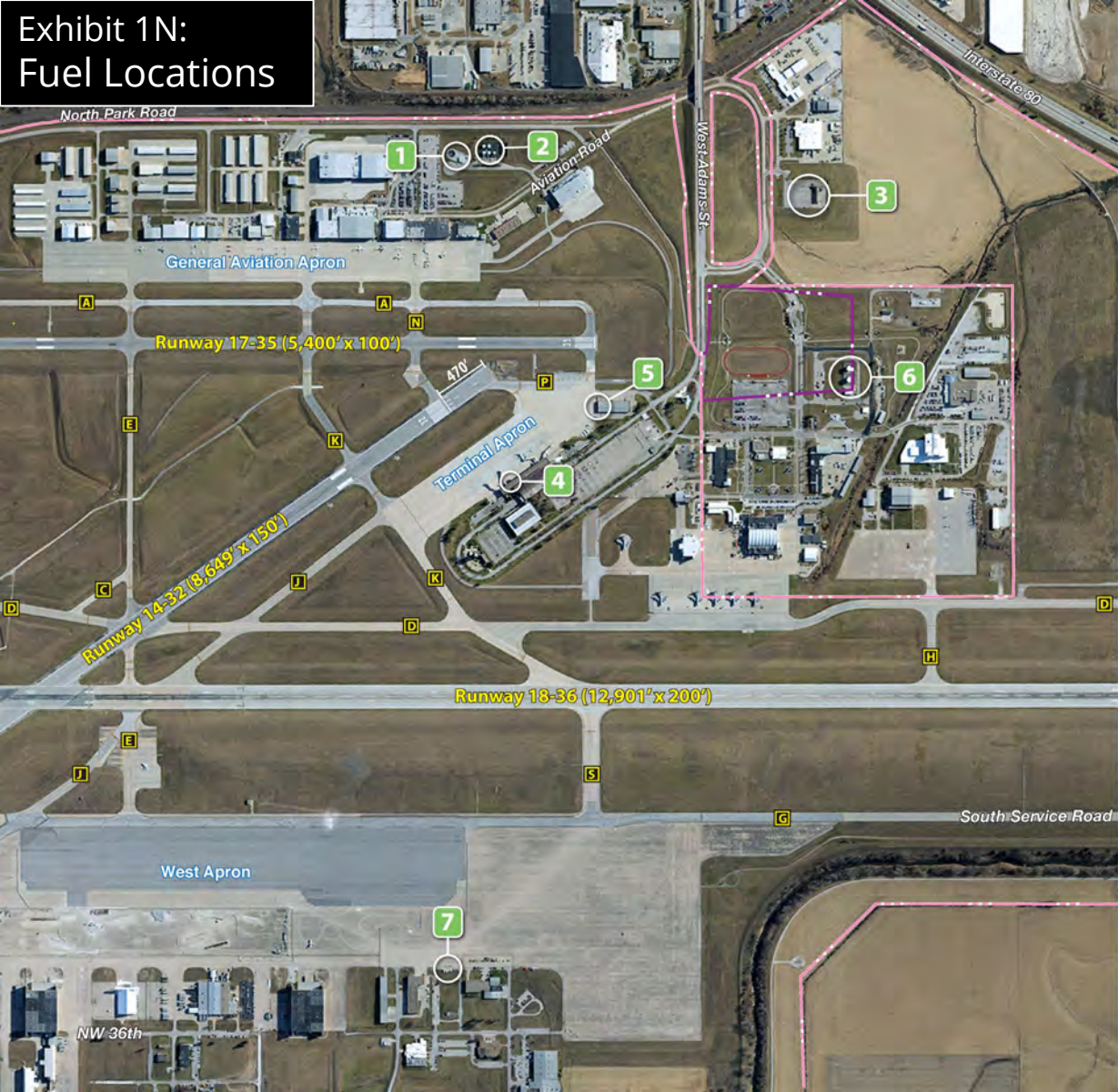
Exhibit 1M:  
Land Lease Map



MAP ID	Tenant	Acres	MAP ID	Tenant	Acres	MAP ID	Tenant	Acres	MAP ID	Tenant	Acres
8	Sadoff Iron and Metal	11.91	29	Thomas Farms	242.41	46	Hessheimer's Beverage	0.31	3215	City of Lincoln, LF&R	1.72
10	Duncan Aviation	7.70	31	Nebraska State Patrol	1.96	47	Daitron	2.53	3620	United States of America	15.87
11	CNG Purchase Agmt - Police	0.20	32	UNL Midwest Roadside Safety	32.14	48	Weathercraft Company	2.39	3629	United States of America	1.06
13	Strauss Ag Enterprises, LLC	30.52	33	Sensory Effects	4.55	49	Lincoln Police Department	0.91	3630	United States of America	0.38
14	Strauss Ag Enterprises, LLC	117.50	34	VACANT	5.20	51	VACANT	5.45	3631	United States of America	2.92
15	National Weather Service	0.05	35	SLK Holdings dba Venetian Ston	2.91	52	Plastic Companies Enterprises	6.17	3632	United States of America	11.79
18	Eric Schroeder	10.43	36	Lincoln Airport Authority	1.22	53	Nebraska Department of Roads	12.84	3635	Department of the Air Force	0.69
20	NRSCCA/SCCA/SAE	93.76	37	Duncan Aviation	1.10	406	Verizon Wireless LLC	0.12	4423	The Smith Collection	6.94
21	Tri-Con	0.83	38	Duncan Aviation	2.22	407	Lincoln Parks & Rec Dept.	54.39	4424	Police Training Range	80.39
22	Nebraska Army National Guard_USPFO Supply	0.78	39	Van Sickle Paint Mfg	4.45	807	VACANT	21.71	4427	NE Dept. of Motor Vehicles	1.96
23	Hexagon Lincoln, Bldg 93 Bay B	3.65	40	Nebraska Plumbing Network	0.18	1207	Hexagon Lincoln Bldg 93, Bay A	3.54	4835	Hausmann Holdings, LLC	0.25
24	Lancaster County Emergency Management	0.07	41	VACANT	1.34	1209	Duncan Aviation (bldg 5737)	7.68	4837	Transportation Specialists	0.60
25	UNL Foundation	2.91	42	VACANT	0.90	1211	Duncan Aviation	3.18	5627	TLN Cargo	0.02
26	VACANT	1.85	43	Nebraska Department of Ag	0.91	1220	Duncan Aviation Parking Lot	0.56			
27	VACANT	0.61	44	Brown Brothers Construction	0.07	2007	M-Court L.L.C.	5.03			
28	Thomas Farms	373.28	45	Hiland Dairy	0.83	3211	Innovative Exhaust Solutions	1.92			



# Exhibit 1N: Fuel Locations



**1 Ross Fuel Farm**

- 1 - 12,000 gal 100LL
- 1 - 12,000 gal Jet A
- 1 - 20,000 gal Jet A

**2 Duncan Fuel Farm**

- 4 - 50,000 gal Jet A
- 1 - 30,000 gal 100LL
- 1 - 2,000 gal Diesel
- 1 - 2,000 gal Unleaded

**3 Rental Car Fuel Storage**

- 1 - 10,000 gal Unleaded

**4 Terminal Ramp Fuel Storage**

- 1 - 2,000 gal Diesel

**5 LAA Cargo Ramp Fuel Storage**

- 1 - 1,000 gal Unleaded
- 1 - 1,000 gal Diesel

**6 National Guard Fuel Farm**

- 2 - 326,000 gal Jet A
- 1 - 5,000 gal Diesel
- 1 - 5,000 gal Unleaded

**7 LAA West Ramp Fuel Storage**

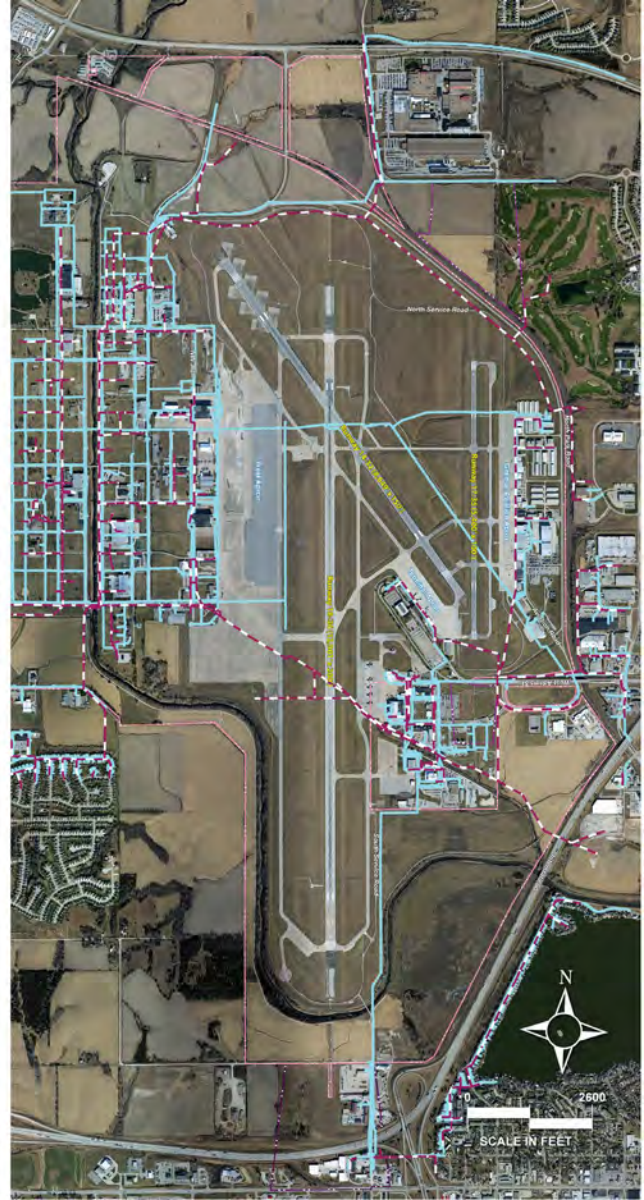
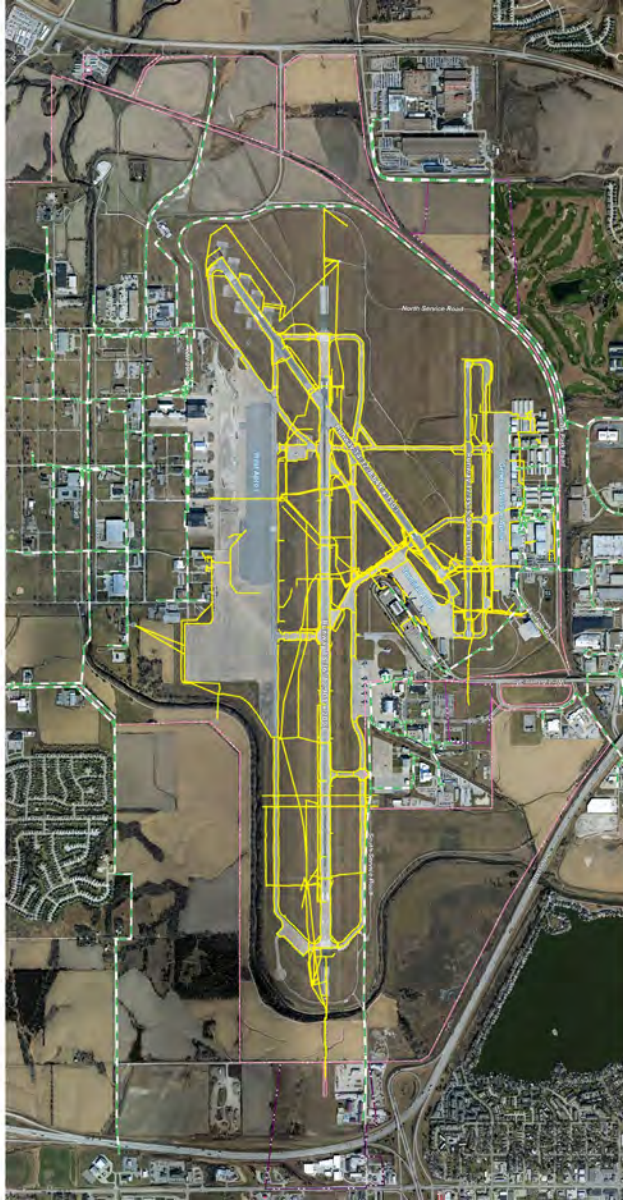
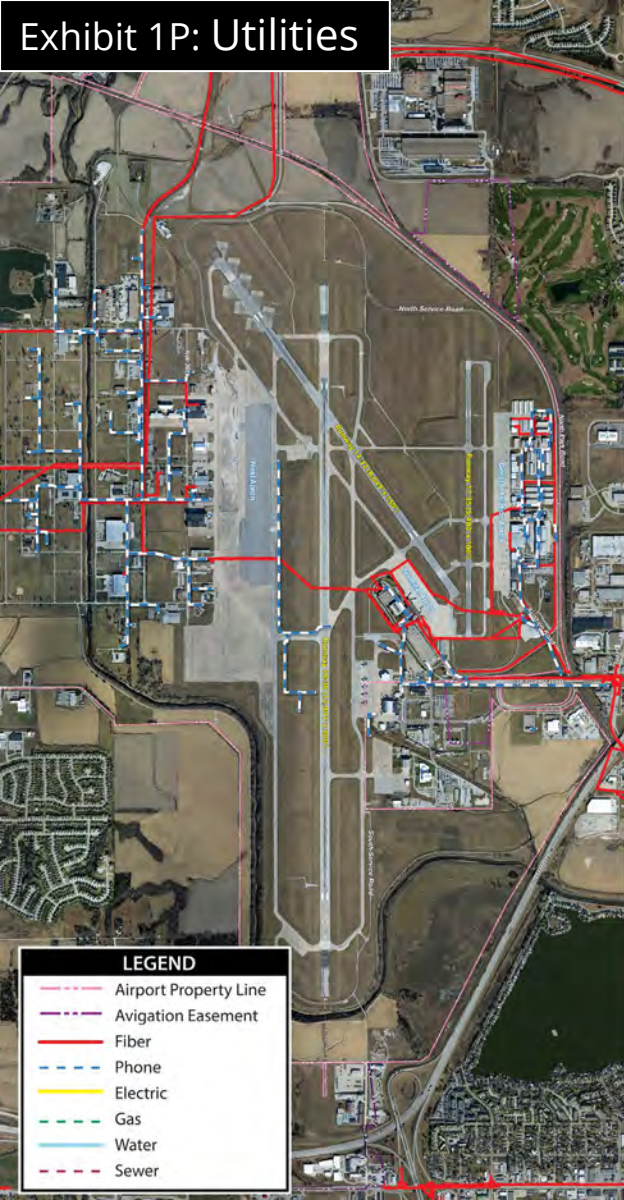
- 1 - 4,000 gal Unleaded (Tank A)
- 2 - 4,000 gal Diesel (Tanks B + D)

**LEGEND**

- Airport Property Line
- Avigation Easement



Exhibit 1P: Utilities

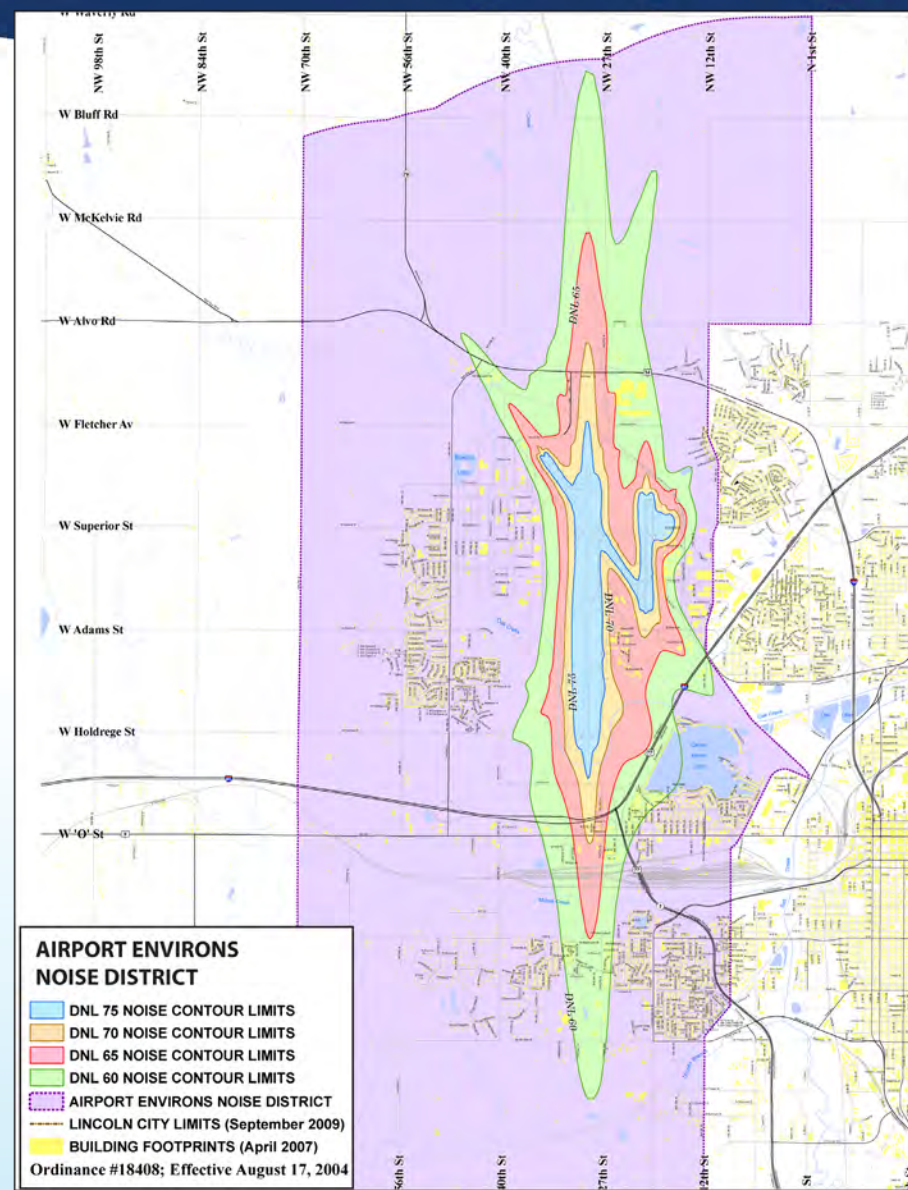




# LINCOLN AIRPORT

## AIRPORT MASTER PLAN

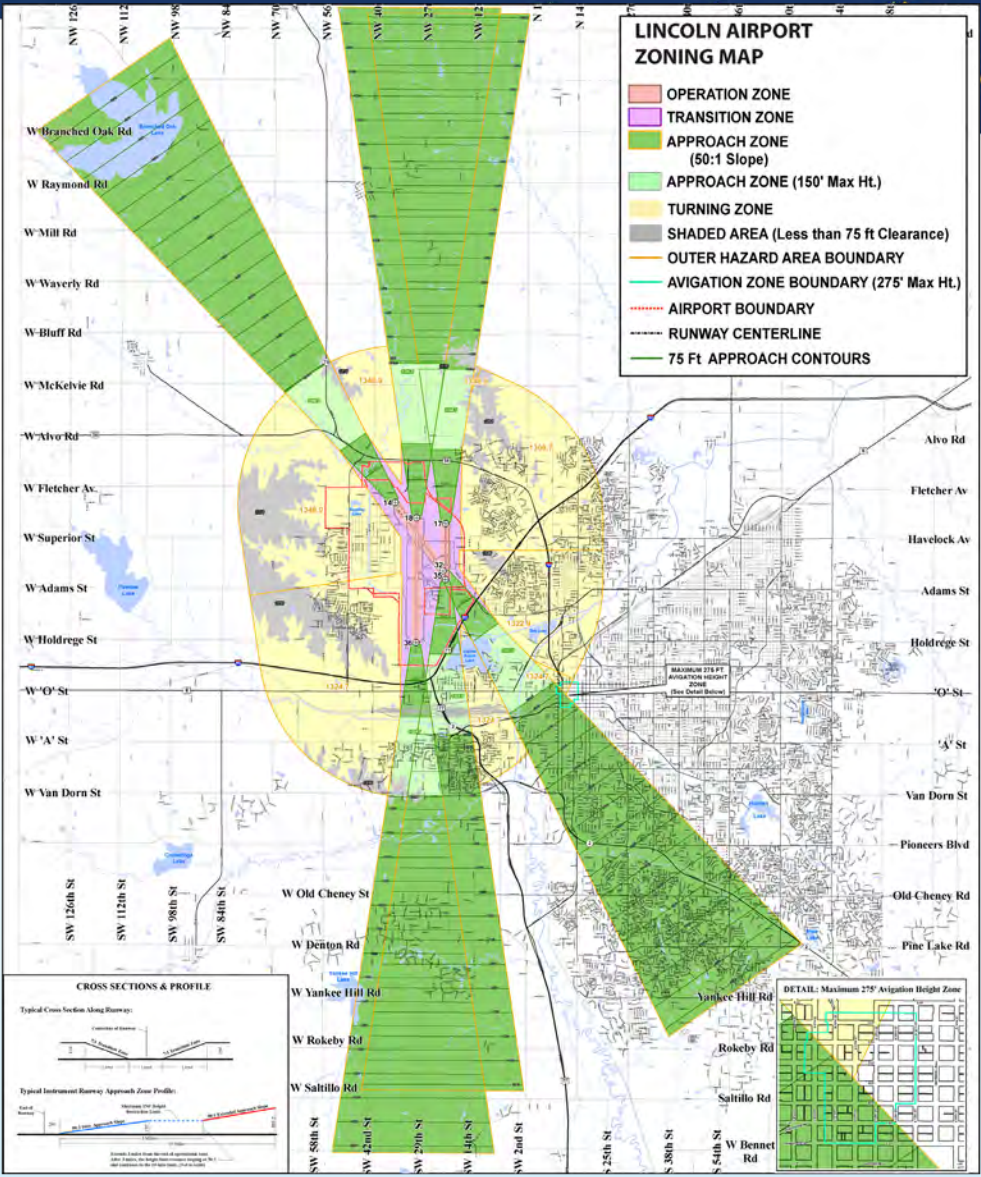
### Exhibit 1U: Airport Environs Noise District



# LINCOLN AIRPORT

## AIRPORT MASTER PLAN

Exhibit 1T:  
Airport Hazard Area

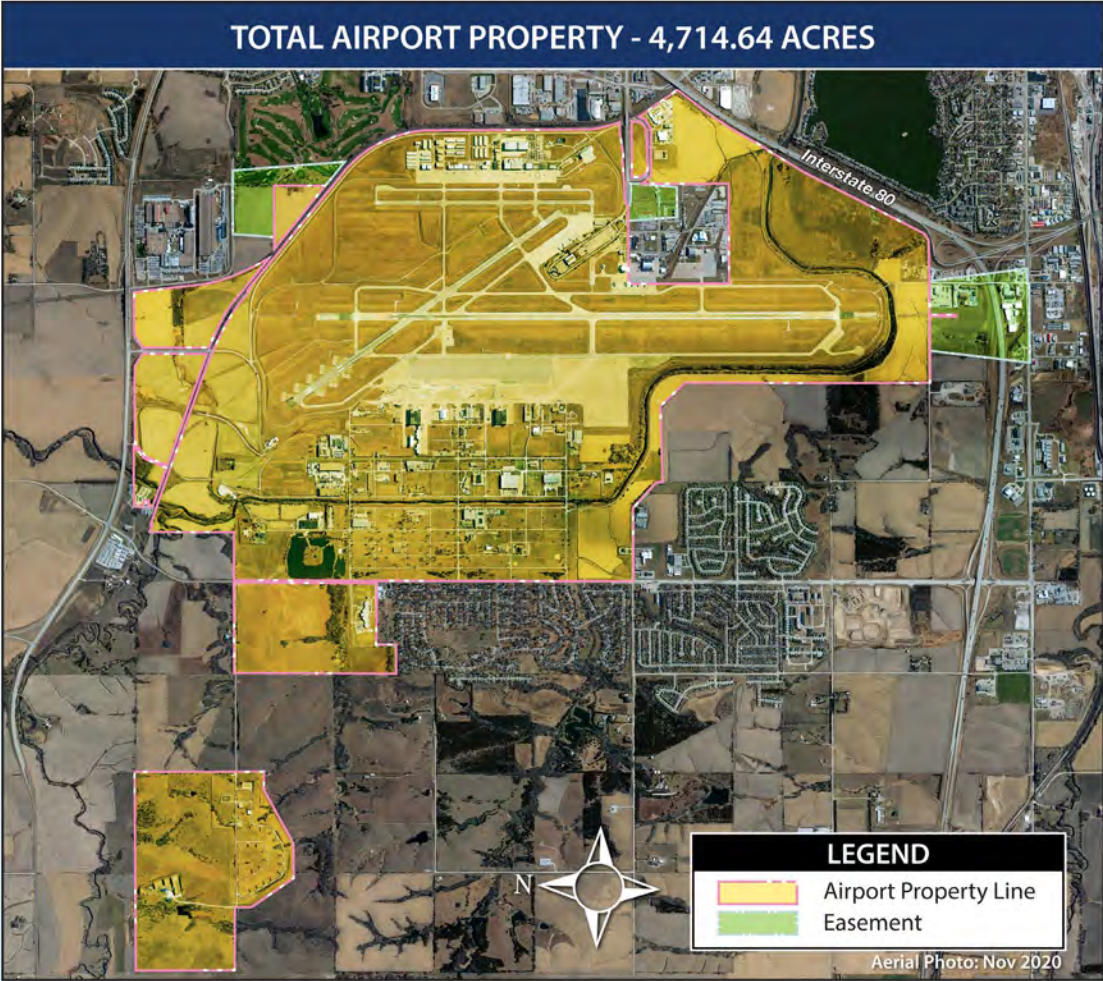






# LINCOLN AIRPORT

AIRPORT MASTER PLAN





# LINCOLN AIRPORT

## AIRPORT MASTER PLAN



### SERVICE ROADS

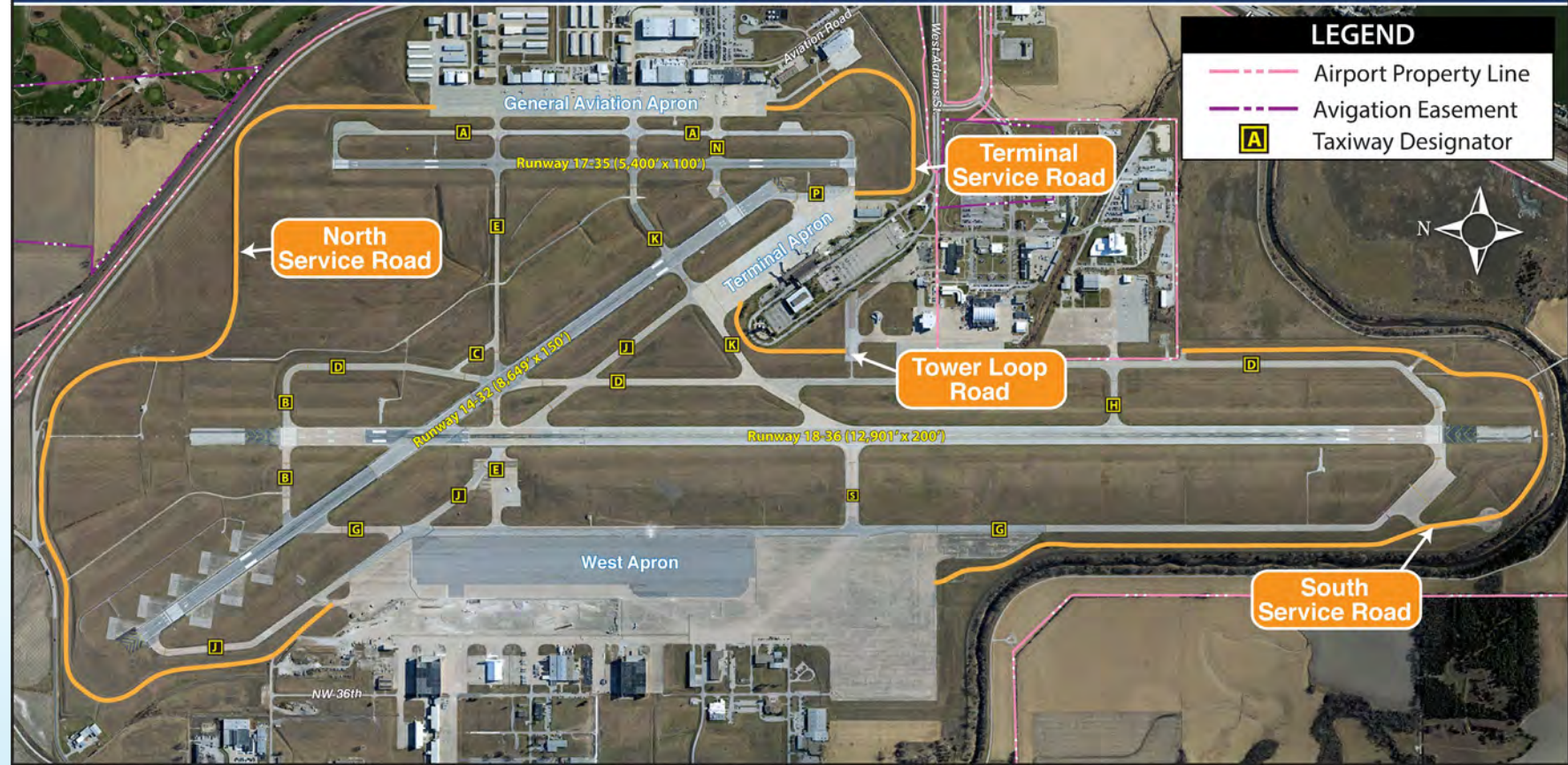






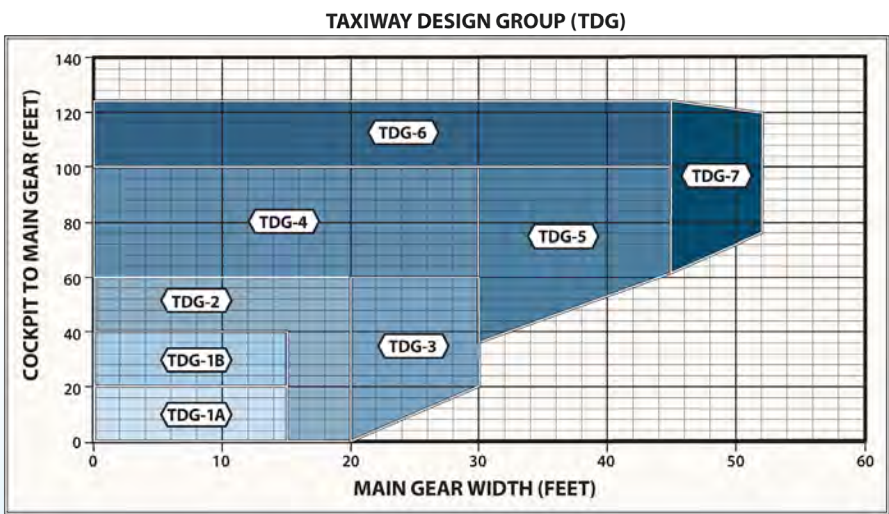
Table 2C: Top 20 Origin-Destination Markets

2007			2011			2015			2019		
Rank	Market City	Passengers	Rank	Market City	Passengers	Rank	Market City	Passengers	Rank	Market City	Passengers
1	Las Vegas	29,350	1	Chicago	18,670	1	Chicago	26,700	1	Chicago	22,920
2	Chicago	24,670	2	Denver	13,600	2	Denver	15,260	2	Minneapolis/St. Paul	19,770
3	Denver	22,920	3	Minneapolis/St. Paul	11,420	3	Los Angeles	13,220	3	Denver	15,530
4	Washington DC	13,020	4	Washington DC	10,510	4	Washington DC	12,350	4	Washington DC	13,580
5	Los Angeles	10,680	5	Los Angeles	9,570	5	Minneapolis/St. Paul	10,760	5	Atlanta	10,570
6	New York City	9,270	6	New York City	9,040	6	Atlanta	9,370	6	Los Angeles	9,290
7	San Francisco	8,130	7	Seattle	6,740	7	New York City	8,930	7	New York City	8,930
8	Indianapolis	6,570	8	Boston	6,140	8	San Francisco	7,950	8	San Francisco	6,760
9	Boston	6,540	9	San Francisco	5,530	9	Boston	7,400	9	Boston	6,590
10	Seattle	5,960	10	Las Vegas	4,720	10	Orlando	6,480	10	Orlando	5,630
11	Philadelphia	4,850	11	Phoenix	4,690	11	Seattle	6,100	11	Phoenix	4,510
12	Detroit	4,590	12	Orlando	4,600	12	Phoenix	4,970	12	Seattle	4,150
13	Atlanta	4,430	13	Philadelphia	4,560	13	Philadelphia	4,760	13	San Diego	4,120
14	Columbus, OH	4,170	14	Indianapolis	4,340	14	Miami	4,630	14	Portland, OR	4,060
15	Portland, OR	3,900	15	Portland, OR	3,850	15	San Diego	4,410	15	Raleigh/Durham, NC	3,820
16	Phoenix	3,680	16	San Diego	3,680	16	Portland, OR	4,290	16	Philadelphia	3,810
17	Orlando	3,570	17	Cleveland	3,580	17	Las Vegas	3,980	17	Miami	3,800
18	Raleigh/Durham, NC	3,570	18	Atlanta	3,540	18	Indianapolis	3,890	18	Austin, TX	3,610
19	Cleveland	3,260	19	Columbus, OH	3,230	19	Raleigh/Durham, NC	3,780	19	Columbus, OH	3,590
20	Minneapolis/St. Paul	3,070	20	Raleigh/Durham, NC	3,060	20	Milwaukee	3,750	20	Tampa, FL	3,560

Source: Origin-Destination Survey of Airline Passenger Traffic, USDOT BTS



Exhibit 2H:  
Aircraft Classification Parameters



Source: FAA AC 150/5300-13A, Airport Design

AIRCRAFT APPROACH CATEGORY (AAC)		
Category	Approach Speed	
A	less than 91 knots	
B	91 knots or more but less than 121 knots	
C	121 knots or more but less than 141 knots	
D	141 knots or more but less than 166 knots	
E	166 knots or more	
AIRPLANE DESIGN GROUP (ADG)		
Group #	Tail Height (ft)	Wingspan (ft)
I	<20	<49
II	20-<30	49-<79
III	30-<45	79-<118
IV	45-<60	118-<171
V	60-<66	171-<214
VI	66-<80	214-<262
VISIBILITY MINIMUMS		
RVR* (ft)	Flight Visibility Category (statute miles)	
VIS	3-mile or greater visibility minimums	
5,000	Not lower than 1-mile	
4,000	Lower than 1-mile but not lower than ¾-mile	
2,400	Lower than ¾-mile but not lower than ½-mile	
1,600	Lower than ½-mile but not lower than ¼-mile	
1,200	Lower than ¼-mile	

\*RVR: Runway Visual Range

# LINCOLNAIRPORT





# LINCOLN AIRPORT

## AIRPORT MASTER PLAN



# LINCOLNAIRPORT





# LINCOLN AIRPORT

AIRPORT MASTER PLAN



# LINCOLNAIRPORT





# LINCOLN AIRPORT

## AIRPORT MASTER PLAN



# LINCOLN AIRPORT

AIRPORT MASTER PLAN

